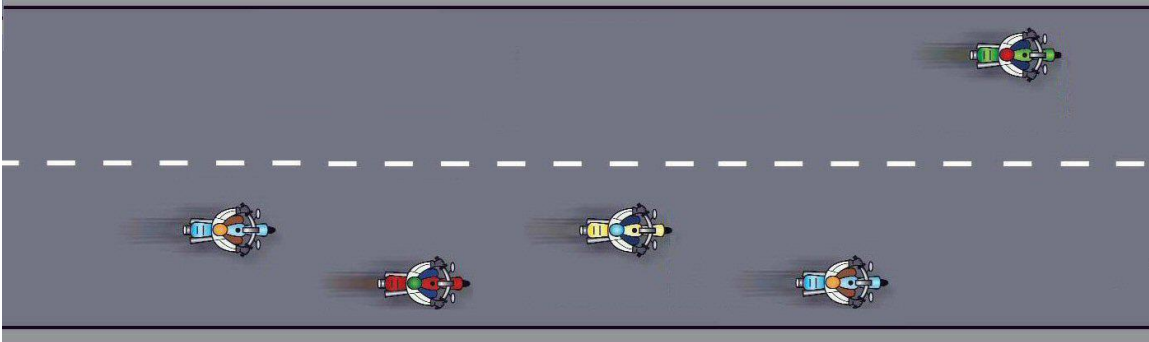


## Changing Lanes From The Front

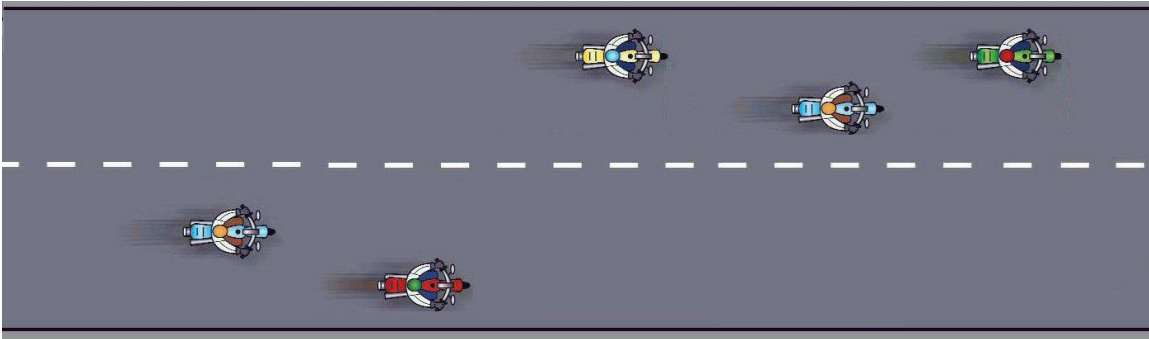
Last month we talked about changing lanes from the rear of the group. Now we will talk about moving into the left lane and then to the right lane, starting from the front, in pairs. The key thing to remember is to maintain the safe 2-second following distance.

### Moving to the left

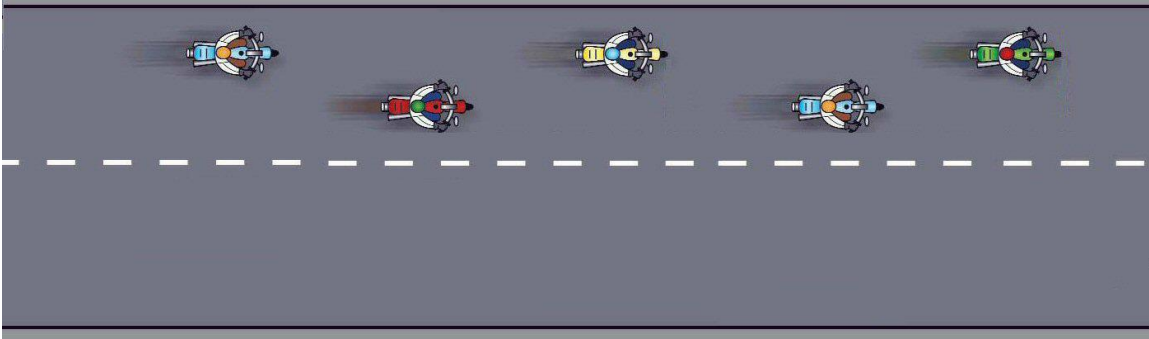
This is usually done to pass slower traffic in front of the lead bike on a multi-lane road. The lead bike moves first because he will not pass close behind the bike in front. Bike number two would break the 2-second rule if he followed.



Bikes two and three move next.



Last, bikes four and five move left when clear.

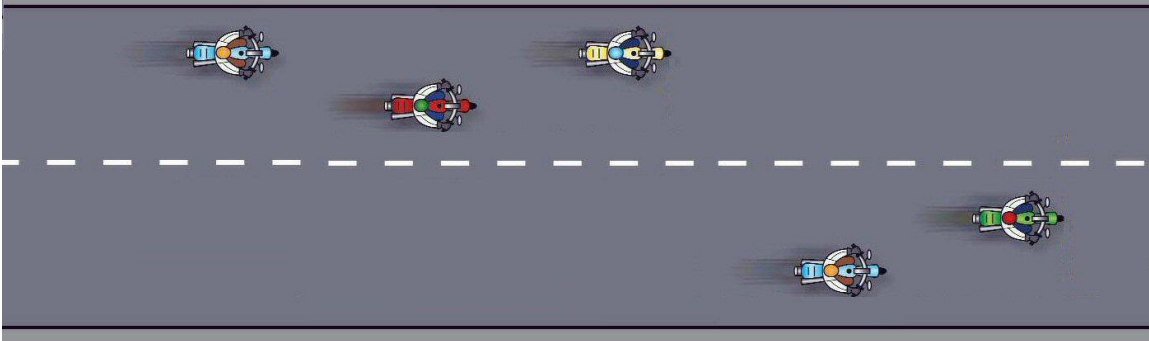


If there were an even number of bikes in the group, the last bike would move by himself.

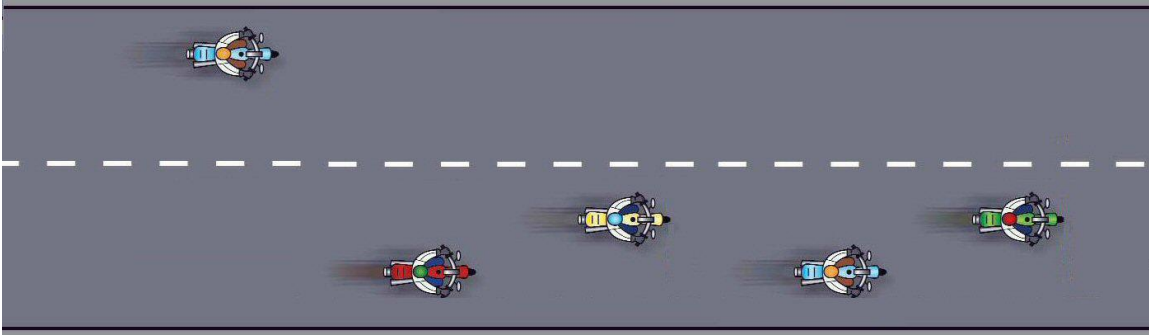
### Moving to the right

This is usually done when the group needs to move over, but traffic is heavy and there is no immediately available space for all of the bikes. The bikes merging from the front need to maintain their speed to make room for the other bikes. If the lead bikes merge and then slow down, there is no space for the other bikes.

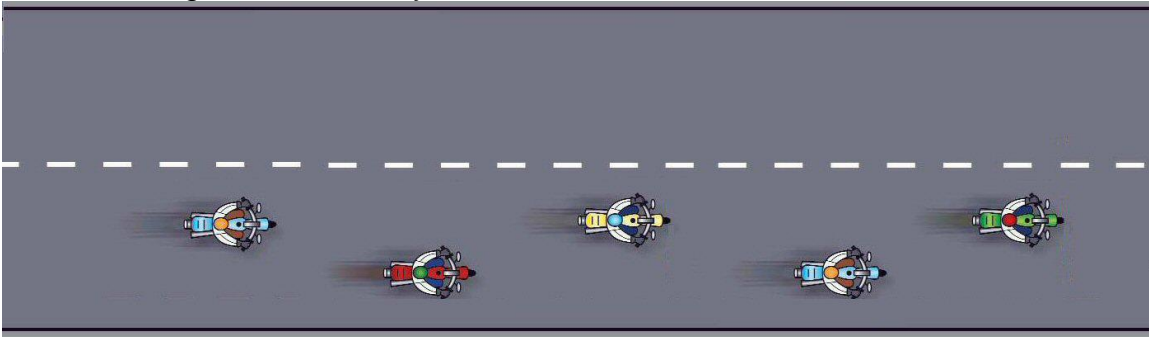
This time, the first TWO bikes move in unison.



Bikes three and four go next.



Last, the tail gunner moves by himself.



If there were an even number of bikes, the last two move at the same time.

All of the above moves are done more easily if the bike pairs communicate with each other.

Changing lanes with a larger group does tend to take more time than with a smaller group, so if exiting a freeway, make sure that all bikes have enough time to make the lane change without scrambling to do so.



And remember: Drive on the right except to pass...