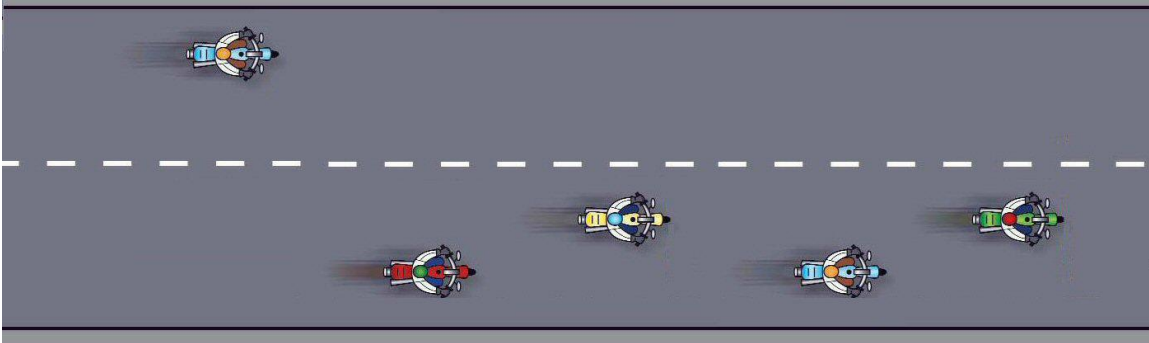


## Changing Lanes From The Rear

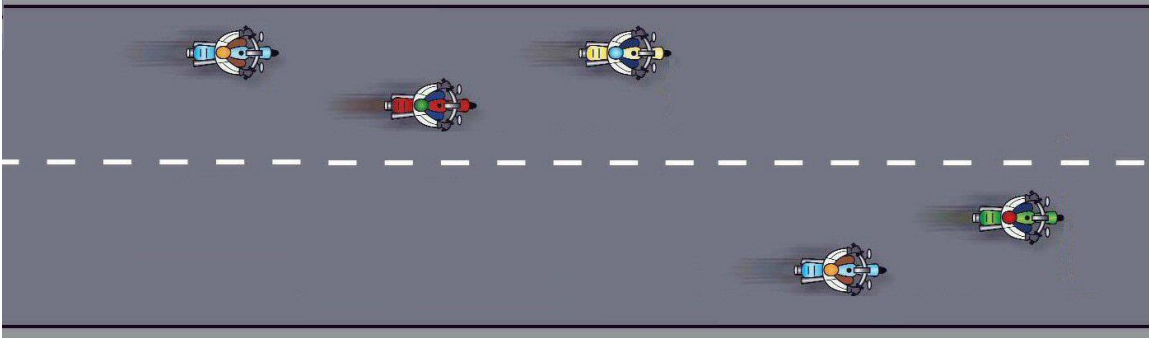
Two months ago we talked about changing lanes as a group. Now we will talk about moving into the left lane and then the right lane, starting from the rear, in pairs. The key thing to remember is to maintain the safe 2-second following distance.

### Moving to the left

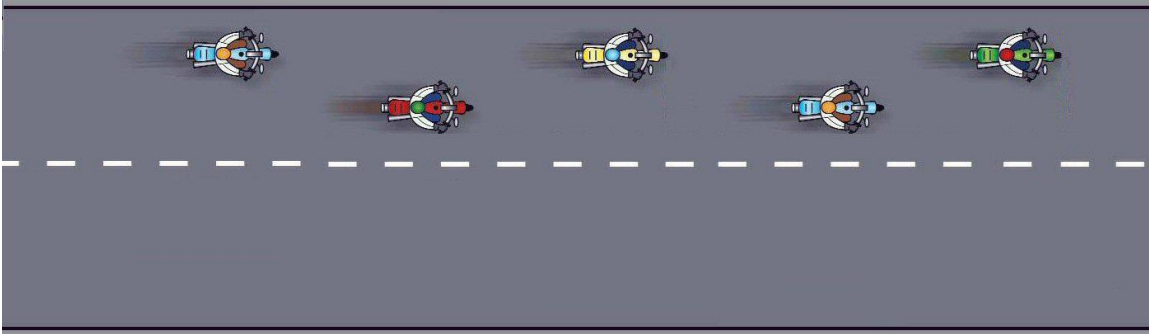
This is usually done to pass slower traffic in front of the lead bike on a multi-lane road. The tail gunner moves first because he will not pass close behind the bike in front.



Then, the next two bikes move to the left.



Last, the remaining front two bikes move to the left.

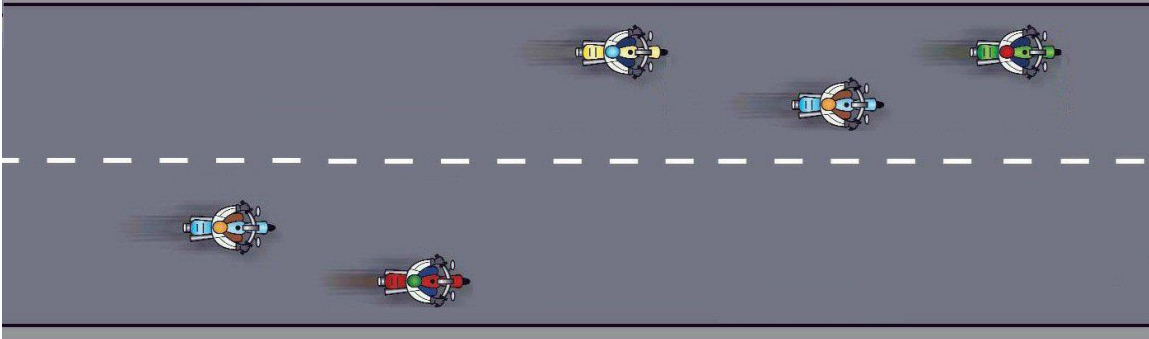


The above example maintains the 2-second gap between bikes, but is only used for an odd number of bikes in the group. For an even number of bikes the last TWO bikes move in unison.

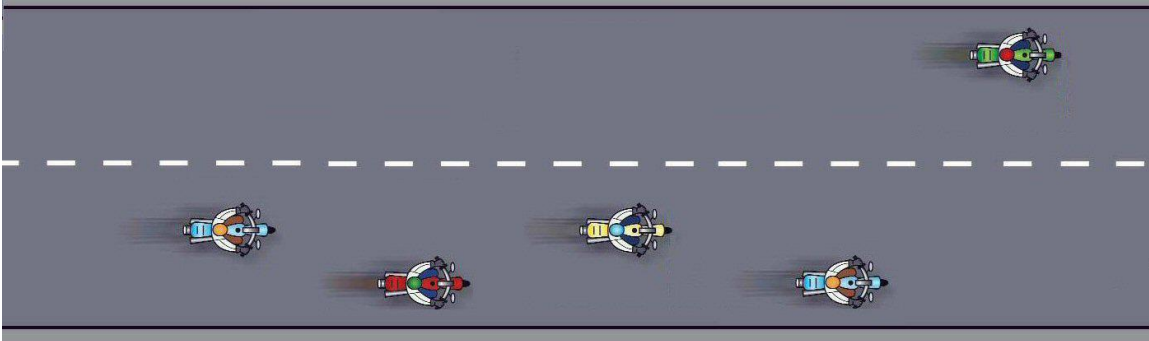
### Moving to the right

This is usually done when the group needs to move over, but traffic is heavy and there is no immediately available space for all of the bikes. The bikes merging from the rear slow down to make room in the front for the other bikes.

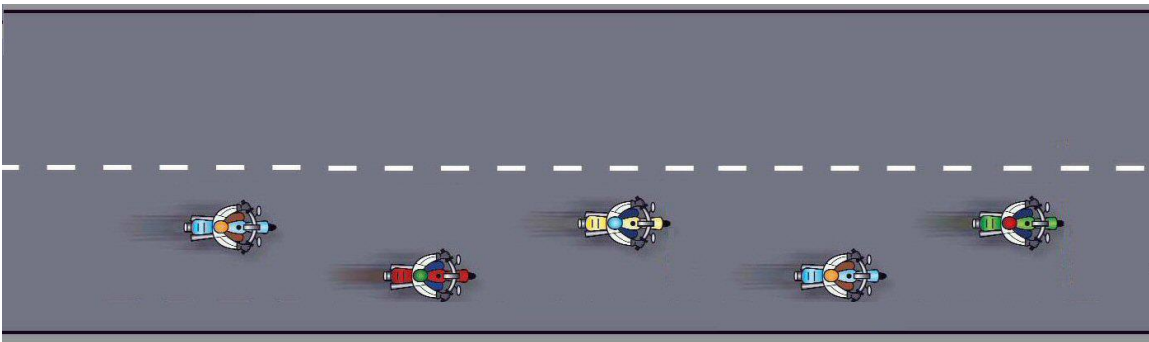
This time, the last TWO bikes move in unison.



The next bikes move in pairs.



The first bike moves over last.



Again, the above example maintains the 2-second gap between bikes, but is only used for an odd number of bikes in the group. For an even number of bikes the tail gunner moves along with the bikes in front moving in pairs.

All of the above moves are done more easily if the bike pairs communicate with each other.

*Next month: Changing lanes from the front.*



And remember: Drive on the right except to pass...