

# The Eagle News

- June 2013 -

GWRRRA



WA-E

Bellevue, WA



"Friends for Fun, Safety and Knowledge"

## Contents

Directors Message	2
Birthdays & Anniversaries	3
Eagle Oops Award	4
Rider Education	5
Understanding Summer Weather—Part 2	6
Key Ring App & Ice Cream Socials	13
Industry News	14
A little humor	15
A bit more humor	16
Recipes	17
One Crazy ride report	19
Calendar	20
Events & For Sale	21
Safe Place	22
Duck Hunt flyer	24
Harvest Run flyer	25
2013 Mileage contest	26
Welcome & 2013 Chapter E Calendar	27
GWRAA Washington Meetings	31
GWRAA Chapter & District Staff	32

## Chapter Staff

Chapter Directors: Bob & Patty Spencer  
Assistant Chapter Directors: Bill & Caryl Estes  
Chapter E Educators: Mike & Lynn Briggs  
Ride Director: Bob Spencer  
Treasurer: Charlene Lee  
Cares & Concerns: Leah Gray  
Dinner Socials Coordinators: Bill & Caryl Estes  
Membership Coordinator: Violet Urquhart  
Mileage Coordinators: Karla & Scott Edwards  
Newsletter Editors: Gordon & Kathy Bousman  
Web Designer: John Smith  
Stores Manager: Mike Keefe  
Historian/photographer: Ron & Kathy Johnson  
Couple of the Year: Ron & Violet Urquhart



# GWRRA



# WA-E

## June 2013 Gold Wing Road Riders Association Region I - WA District



### "Friends for Fun, Safety and Knowledge"



Next Meeting: June 15, 2013

Crystal Creek Café

22620 Bothell-Everett Hwy.

Bothell, WA. 98021



June is here and we all know what June brings. Warm weather! And "Bob's Omak Loop" of course! This ride has been a chapter favorite since its inception eight years ago. We have changed it up a couple of times in the past when one year we rode to Goldendale and last year our destination was Grand Coulee for the laser light show.

This year "Bob's Omak Loop" is going back to the Omak "Rodeway Inn" which was the original destination of the ride and how it got its name. As in past years Patty and I will be leading a group ride for those that want to join us. We also consider this ride a "Destination Ride" meaning that you can also choose your own route and departure time and meet us at the destination, but there is one rule on this ride. The first riders to the destination are to have beer and pop on ice when everyone else arrives, but not to worry, everyone will pitch in to cover the costs.

This year "Bob's Omak Loop" is on June 29<sup>th</sup> and 30<sup>th</sup>. We will leave Saturday morning from the Canyon Park QFC Starbucks and meet up with any additional riders in Monroe, on our way to Leavenworth. Departure time and the rest of the route to Omak will be announced later. Our return ride on Sunday will take us over "Loup Loup" pass and the North Cascades Highway, with a stop in Winthrop. More details on the return route will also be announced later.

We always have a lot of fun on this ride. John's favorite duty is to challenge the Mexican restaurant down the street from the motel, to make room for 30 hungry bikers and to date they haven't let him down. We have blocked a dozen rooms over by the pool area where we like to hang out. The rooms have all been remodeled and are all single kings. 1<sup>st</sup> floor are \$69.99 and 2<sup>nd</sup> floor are \$64.99. They still have the awesome free breakfast. Call to make your reservation now 509-826-0400. The blocked rooms are listed under "Goldwing" or Spencer Group". We hope to see you all on the ride. It's just not as much fun without you.

Also in June is the Chapter D "Duck Hunt" in the Montesano/ Aberdeen area on Saturday the 8<sup>th</sup>. This has always been a nice ride that typically takes you out by the ocean. You can find all the information on the weekly "Eagle Eye".

Last, but not least please plan on going on the Chapter B "Harvest Run" in Bremerton on Saturday the 22<sup>nd</sup>. Since Chapter B has been so supportive of us at our "Surf Watch" we have committed to showing up to their run with a group from chapter E. If you don't do any other chapter ride this year, please try to make this one. We need to show our support for chapter B. Read the weekly chapter E "Eagle Eye" for more information.

**Bob and Patty**



## June Birthdays

Karen Jamison	3
Jean Kuper	14



## June Anniversaries

Ron & Lana Jo Peck	22
Mike & Lynn Keefe	23

## May Birthday Folks

Caryl & Bill Estes



If we have missed any announcement, birthday or anniversary please email Leah Gray or Bob & Patty Spencer with dates, names and information. If you have pictures and/or stories, please attach them to your email.

©Cares & Concerns: Please remember to inform Leah Gray of any cares or concerns you may have or if you are aware of other members in need of support. If someone is ill or incapacitated or simply is in need of a friendly hug or support, please let us know. We really do want to know if you are OK or in need of anything.

Bob & Patty Spencer - [bspwae@frontier.com](mailto:bspwae@frontier.com)

Leah Gray - [lsfvr57@aol.com](mailto:lsfvr57@aol.com)





# THE EAGLE OOPS AWARD

Oh Oh!

The current recipient of the Eagle Oops award is Bob Spencer. He was nominated by John Smith, the previous winner of the award. The reason for Bob winning the **award was one of those deals "where you just had to be there" to understand.** The membership in attendance at the May chapter meeting unanimously voted for Bob to receive this cherished award.



Bob Spencer - happily receiving the Eagle Oops award from John Smith



Lyle Lovett—2013 National Spokesman

**This year's Ride For Kids will be held September 8th at** Remlinger Farms  
32610 Northeast 32nd St. Carnation, WA 98014

Captain Ron and Violet Urquhart have started a business to provide embroidery for the chapter shirts. If you are interested in getting that done, please bring the article of clothing that you want the work done on to a chapter meeting and provide that to them. You can contact them by email ([highlandembroidery@gmail.com](mailto:highlandembroidery@gmail.com)) for pricing and availability or call 425-512-9498





# Rider Education

by Mike Briggs



## Chapter E Rider Education

---

I have been working in downtown Seattle for the last several weeks and I am seeing a phenomenon **that is concerning me. It's bad enough for me when I am in the company truck but on a bike it raises** the risk significantly. I am talking about cell phone use and texting! Old story right? Apparently not. I wanted to raise awareness and let you know what to look for.

I was reading an article in the Chapter L newsletter and it contained quite a bit of information from an article out of *"Motorcycle Cruiser"*. I am going to share some of this with you as well.

Texting while driving and talking on a cell phone (except for hands-free) is a primary offense in Washington State and the U.S. Department of Transportation has now prohibited texting by commercial drivers. The Federal Motor Carrier Safety Administration (FMCSA) concludes that **"drivers take their eyes off the road for an average of 4.6 seconds out of every 6 seconds of texting". In addition a driver who texts while driving are 20 times more likely to get into an accident** than non-distracted drivers. I am sure that you have experienced this behavior yourself but until you come across a distracted driver how do you tell? I have been observing these guys and I have been seeing a consistent sign. When there is a lot of traffic, the distracted driver is the one with 250 feet between him/her and the vehicle in front of them. The good part is that gives you a window to change lanes on the commute. The bad part is they will rear end you because they are heads down looking at their cellphones. This is by no means a scientific result, just my observation. So far, other **than what appears to be driving under the influence, I haven't been able to see these drivers as well** when there is light traffic. It is amazing to me how many people are doing this.

According to the Insurance Institute for Highway Safety, all of the states around us have cellphone and texting bans, the exceptions being Montana and Arizona. There are a couple of other states on the east coast. Talking on a hand-held cellphone is banned in 11 states including Washington, Oregon, California and Nevada.

There are enough things to manage already, drivers texting just adds to the risk. Obviously, I have been trying to stay away from these guys as much as possible. I am not sure that there is much more **a rider can do when riding in urban areas other than be aware. So let's be careful out there and be aware....**

Thanks,

Mike and Lynn Briggs

Chapter E Educator

# UNDERSTANDING SUMMER WEATHER FOR THE RIDER - Part 2

By Gordon Bousman

Last month we talked about air masses and how their interaction creates rain storms and thunderstorms. We also looked at Wind and gave some suggestions for getting good forecasts keeping the “big picture” in mind. This month, we’ll discuss clouds and weather tools for the long-distance rider.

## CLOUDS

What is a cloud? It’s a visible mass of liquid droplets or frozen crystals suspended in the atmosphere. Understanding clouds while on a long distance ride can be helpful because they can sometimes give a prediction of what weather is to come and because it can give a warning of Weather to be avoided. So let’s take a look at what certain types of clouds can tell you:



Cirrus (ice crystal) clouds (sometimes called Mares Tail clouds) are generally located at jet airliner levels (30,000 ft.) and usually precede a weather system – if you are west bound and see a lot of these wispy clouds, then you may encounter stormy weather in the next 24-36 hours. The same can apply to jet contrails – if you see a lot of these on an otherwise clear day, then it means that there is lots of moisture in the upper levels of the atmosphere which usually precedes a storm system. As the storm gets closer, the Cirrus clouds get more pronounced and stratified (upper right) usually meaning a storm within 12 to 24 hours.



Altostratus or “Mackerel” clouds are grayish-white with one part of the cloud darker than the other; there is a lot of contrast between light and dark. They can blanket much of the sky in small, puffy, round layers. They resemble the striped patterns of fish scales on a mackerel hence the name “mackerel sky.” Mackerel skies and mare’s tails formations sometimes appear in the same sky. When that happens, precipitation is likely to follow within 36 hours.

The old sailor’s saying for these kinds of clouds is “Mares tails and mackerel scales, tall ships carry short sails.” Another is “Mackerel sky, storm is nigh,” - if you see mackerel clouds on a warm, humid morning, be prepared to see thunderstorms late in the afternoon.



Mackerel Sky





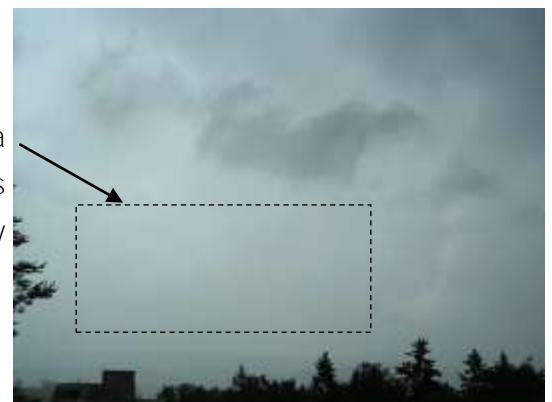
Stratus clouds are low level and usually block the entire sky (a common sight in Seattle). The good news is that they will usually only produce light mist or drizzle.

Mammatus clouds that look like hanging bulges look scary but they are actually a messenger signaling a declining thunderstorm area where the air is rapidly sinking (i.e. a thunderstorm is falling apart). They are full of ice particles falling down from the upper part of an aged thunderstorm. Usually they are good sign that thunderstorms are ending. Still, caution is recommended to be observant for severe weather in the area.



Fair Weather Clouds: When you see puffy clouds that seem to be spread out forever and which are not building or growing, these are a good indication that there is no lifting going on (remember from our article last month that clouds need rapid lifting in order to make rain and/or thunderstorms) and thus you will likely encounter a good day **of riding**. **However it's wise to keep an eye on such types of** clouds and if you start to see significant building and darkening of the undersides, then the chances of rain will increase.

Beware of the area where the cloud is mostly opaque (cloud area without definition) for this may be where the most rain is (applies to general rain showers only, not thunderstorms) - not necessarily dangerous but you will be getting wet.



**ROTOR CLOUDS:** If you've lived in Seattle long enough, you probably know that lens shaped clouds seen near or over Mt. Rainer mean that stormy weather is coming within 24-48 hours. These clouds are called Rotor or Lenticular clouds and are formed when strong winds with lots of moisture are blowing across a high mountain. You can see these anywhere in the country where there are high mountains; they are an early signal of bad weather to come. BTW, pilots are very wary of these clouds because it means that there is lots of severe turbulence and rough flying conditions in the area.



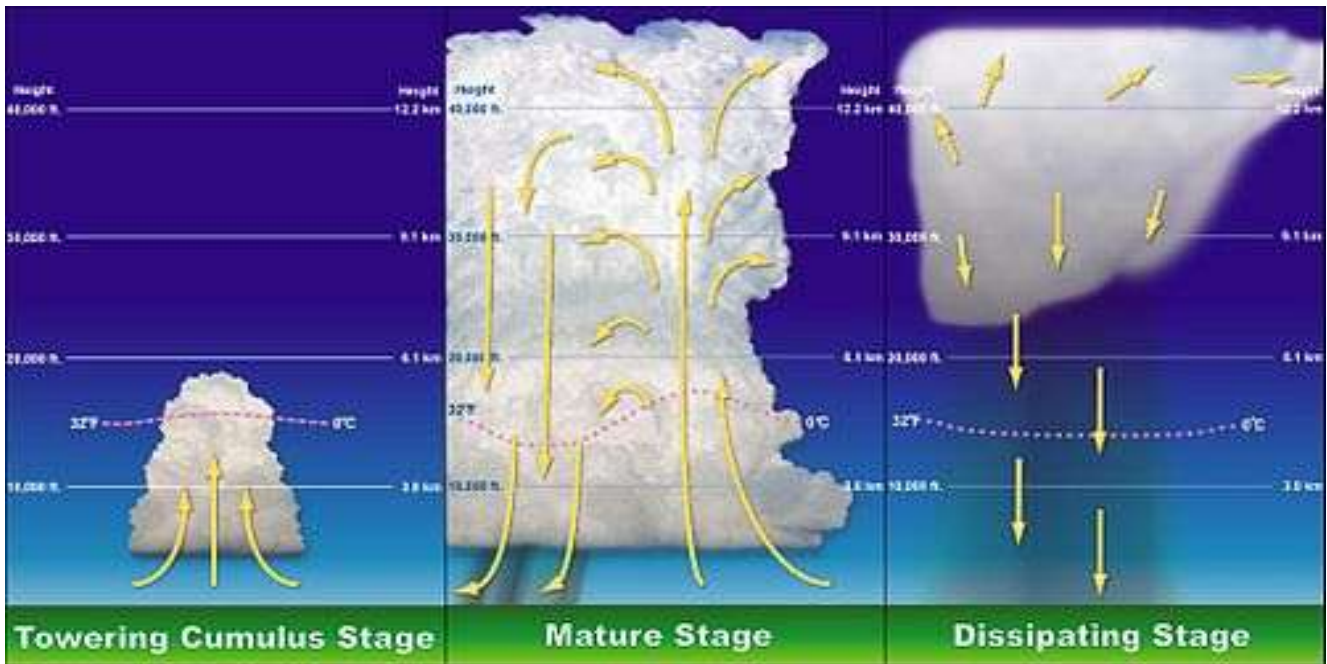
**This is called "Virga"** - rain that falls but never reaches the ground because the air below it is dry enough to evaporate the rain before it hits the ground. You probably won't get very wet if you ride underneath Virga. However be on the lookout for "dry lightning" which can sometimes occur with more vigorous Virga conditions.

**Thunderstorms:** Thunderstorms are built from rapidly rising moist warm air. They usually have a 3-stage but limited life of approximately 90 minutes. Thunderstorms can be isolated and build in otherwise what appears to be a good but humid weather area due to rising heat from sun-drenched ground. With such isolated thunderstorms, a rider can either stop or wait for it dissipate or possibly find another route to go around it. However when the air is really unstable (hot and sticky conditions) multiple thunderstorms can build and fill up an entire area with such storms. Thunderstorms will go through their 90-minute lifecycle and dissipate but others can build in the immediate area giving the impression of continuous bad weather. The worst conditions are when a cold-front is pushing up against warm moist air resulting in a line of thunderstorms which can have heavy rain, wind, hail, dangerous lightning, and even tornadoes.



Another great example of this is in the western side of the Florida where in the afternoon, cooler air from the ocean will push inland bumping up against hot moist air over land causing it to lift which creates **tremendous thunderstorms but which dissipate within a few hours (it's almost a guaranteed daily event in the Florida summer time especially near Tampa - some say that you can set your watch by it).**

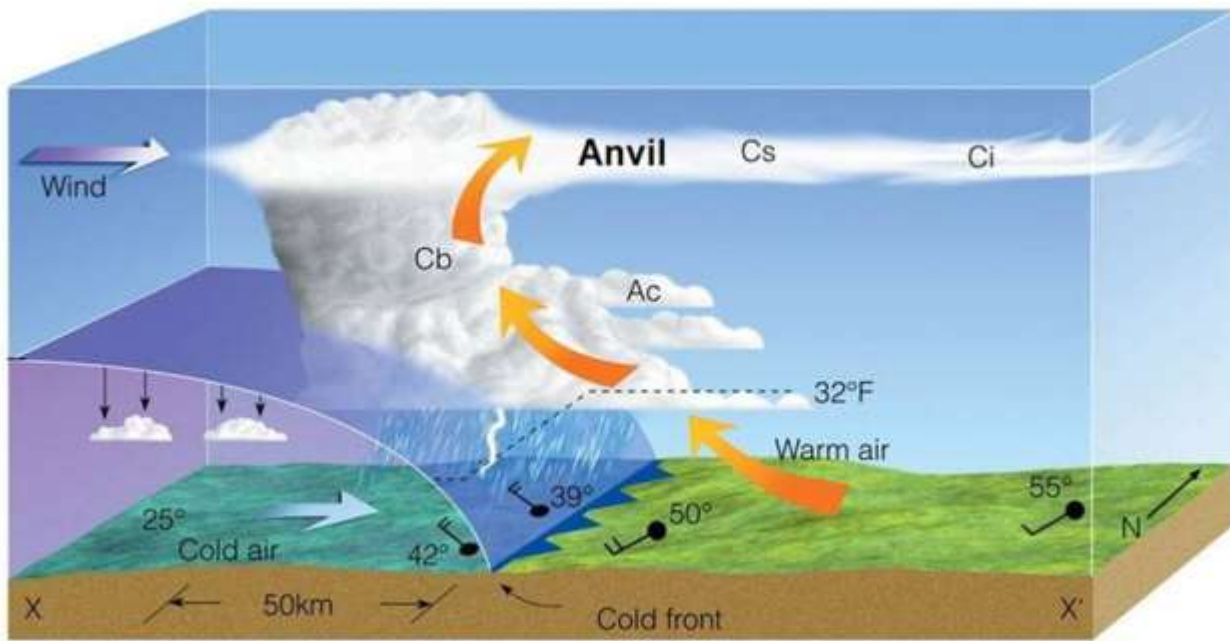




The 3 Stages in the life of a thunderstorm—approximately 30 minutes for each stage



This is called a "Super-Cell" - a particularly massive thunderstorm which needs to be avoided at all costs due to lightning and hail.



This depicts how a cold front builds thunderstorms - the cold intruding air pushes the warm moist air up to high levels creating a massive and dangerous cloud which can produce lightning, heavy rain, and hail. Note that at high levels (30,000+ ft.), a Jetstream can blow off the top of the thunderstorm creating an "anvil". Anvils may be out in front of a thunderstorm by many miles but should be avoided because sometimes the thunderstorm can eject hail out of the leading anvil.



Here's what the anvil from a thunderstorm looks like from the ground. It precedes the front of a thunderstorm and is generated by high altitude winds blowing off the top of a thunderstorm. It can sometimes spit out hail far from the central portion of the thunderstorm.

The bottom line is that if you sense that you are about to enter an area of thunderstorms, be smart and **seek shelter or turn around and reverse course**. You don't want to be exposed to the high wind gusts and worse, chance being hit by deadly lightning. Even more, your ride will be ruined if you get into hail that hurts you and your bike. Getting underneath an overpass will provide some very limited shelter but you're much better off to get inside a building. Better yet, if the thunderstorms are numerous, end your ride for the day and get safely inside a motel.



If you see an area of the sky where the storms clouds have a **GREEN** tint or hue to them, be very alert that severe weather is likely in that area and that a large amount of hail is in the storm. The green tint comes from the sun shining down through a shaft of hail in a severe thunderstorm capable of producing tornadoes. The green color should be a four-alarm alert to you to get out of the area or seek immediate shelter - this is a dangerous storm. These types of clouds are mostly seen in the Midwest.

## WEATHER TOOLS:

While on a long-distance ride - and even though you may have obtained a weather forecast before you got on the bike for the day, you will want to be able to stay abreast of the weather situation particularly if the conditions are unstable and dynamic. On the Goldwing GL1800, you have a great tool right at your fingertips: The weather-band radio. The National Weather Service operates 1000 weather transmitting



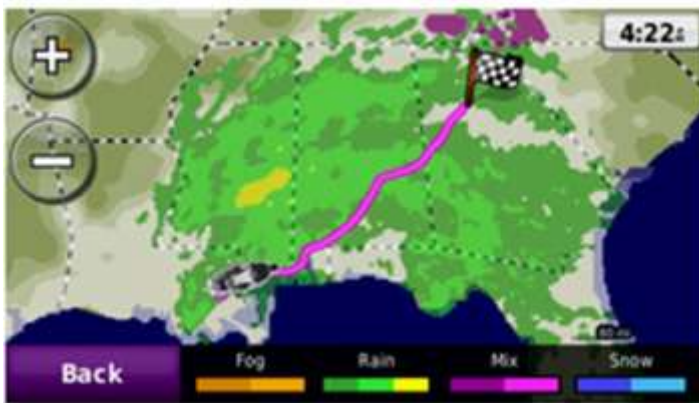
stations throughout the 50 states operating in the VHF frequency band on seven different frequencies (these seven frequencies can be scanned through using your tune button on your left handlebar). While the distance that each broadcasting station is limited to about 50-75 miles, you should be within the range of nearby station for a large portion of your ride. In some cases, you may be able to pick up more than one station at a time and thus you can pick the one that is stronger or pertinent to your area of interest. You can see from the map that areas of non-coverage (brown shading) are fairly small in Washington (except for the north central region).

The voices on the NWS broadcasts are computer generated (from text) and while they can be slightly difficult to listen to, there is a lot of good information to be had such as current conditions, forecasts (including long-range forecasts), and emergency warnings regarding severe weather. In Canada, Environment Canada uses the exact same frequencies and therefore you can expect to be able to use your Goldwing GL1800 bike weather channels across all of Canada as well.

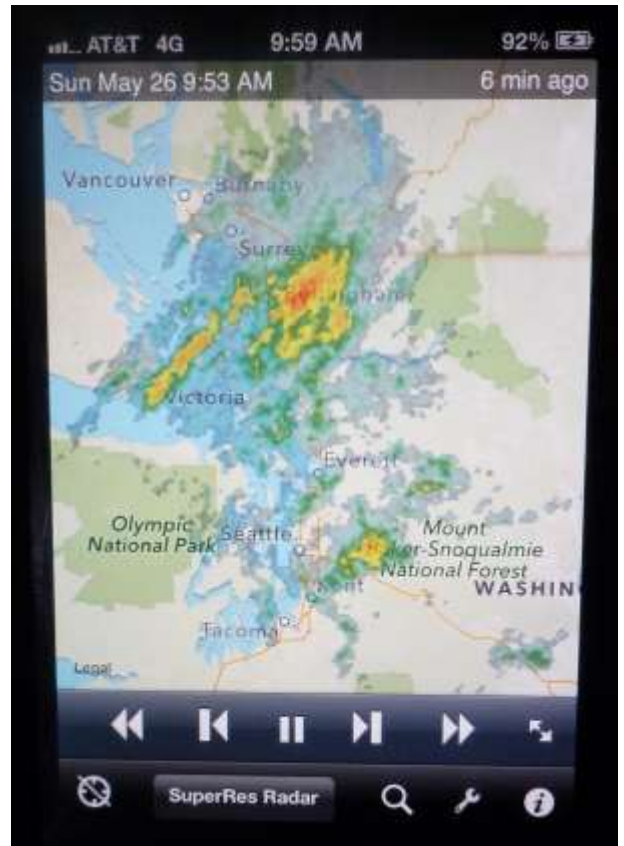


## WEATHER RADAR ON THE BIKE

Having real-time weather radar available on your bike can be invaluable on a long-distance (or even local) ride. There are two viable options available for this: 1) A GPS which can display radar via the Sirius XM satellite system or 2) using an iPhone or Android phone with a weather radar app that uses the cell phone network to obtain radar data. Both have pluses and minuses. The GPS solution for the motorcyclist is generally limited to the rather expensive **Garmin Zumo 665™ (\$800)** which also requires a **Sirius XM NavWeather™ subscription (\$9.95/month)** in order to receive the radar data from their satellite. The plus side is that the Garmin weather radar is somewhat more reliable than cell phone data (since there can be areas of no cell phone coverage on a long ride) however in heavily forested areas, the signal from the satellite can be intermittently blocked by trees as you ride (a known problem with Sirius XM here in the Pacific Northwest). The cell phone solution is rather cheap in comparison requiring only a bike mounting bracket for the phone plus an app such as RadarUS+ (\$2.99) or MyRadar (free) for the iPhone or RadarNOW! (free) for the Android phone. The downside is the possibility of losing radar coverage in "no-signal" cell areas. Depending on which mounting case you purchase, you can also power the phone via the accessory 12V plug or by hard-wiring a charger module to the bike battery accessory terminal. Practice smart rider safety with these tools—get the application running before you start riding and don't try to adjust it while riding.



Weather radar from Sirius NavWeather™ as seen on a Garmin Zumo 655 GPS



Weather radar as seen on the author's iPhone mounted on his GL1800 handlebar using the RadarUS+ app. The mounting case is a waterproof ram mount case which also powers the phone from the bike battery (available from Amazon—approx. \$60)

## DID YOU KNOW THAT THERE IS AN APP FOR THAT?

By: Karla Edwards



<http://www.youtube.com/watch?v=yoPf98i8A0g>

Is your wallet similar to the George Costanza wallet? Well now there is an app for that too! Key Ring will add all of your loyalty and reward cards in one handy spot, your phone. To find it go to your app store and look up **Key Ring** app. “Use it to scan and store your existing loyalty cards, enroll in new loyalty programs, and access exclusive coupons and discounts.” 15,527 give this app a 5 star review and an average rating of 4.1 based on 30,180 reviews! I give it a 5 stars as it clears out the clutter! Check it out...

## SUMMER SOCIALS

Our summer socials are held each Wednesday evening at the Thrashers Corner Dairy Queen (Bothell-Everett Highway just north of Maltby Road) — This location is rather easy to get to from the east and south—take Avondale to Woody-Duvall Road, east to Paradise Lake Ride and then north and west crossing highway 522 to pass through Maltby, then crossing highway 9 with the DQ being located just 600 ft. north on Bothell-Everett Highway from Maltby Road.



## What's in your First Aid Kit?

**Do you have a first aid kit? As Nurse Leah has reminded us in the past, it's wise to check your first-aid kit for expired items. If you don't have a first-aid kit, you might wish to "build your own" as many first aid kits sold in drug and discount stores have mostly small bandages which are inappropriate for treating potential road-side injuries. Gauze pads (2 x 2, 3 x 3, and 4 x 4) are suggested as well as tape, a small ace bandage, disposable gloves (which can be used as an ice bag in a pinch), disposable ice pack, scissors, antibiotic lotion, butterfly bandages, tweezers, saline eye wash, and yes...a few regular bandages. Walgreens sells empty first-aid bags and everything you might need to construct an appropriate kit for motorcycling.**



## Motorhead Scuttlebutt

For several years American Honda has been rebuilding and the results of their efforts are finally beginning to show up in the marketplace. One of their main objectives has been to build new and exciting products at a lower price and to do this they have been building more efficient manufacturing plants and locating them where the costs of operation are lower.



In every category of two wheeled products we are now seeing high quality at lower prices very much in line with Honda's goals. Best examples of this are F6-B, mid size motorcycles, and now the soon to arrive line of side-by-side off-road vehicles, sometimes referred to as community vehicles in recognition of the fact they are showing up on the main streets in many communities. Look for seven or more new models to arrive in the next six months. Interesting design and technology will continue to highlight new products.

The coffee pot is always on and the air supply hose is always there for a tire check!

Mike





## INTERESTING TRIKE



*Laughter*



## Ole and Sven

*Ole and Sven were drinking buddies who worked as aircraft mechanics in Minneapolis and one day the airport was fogged in and they were stuck in the hangar with nothing to do.*

*Ole said, "I vish ve had somethin ta drink!"*

*Sven says, "Me too. Y'know, I hear ya can drink dat jet fuel and get a buzz. Ya vanna try it?"*

*So they pour themselves a couple of glasses of high octane hooch and got completely smashed.*

*Next morning Ole woke up and is surprised at how good he feels. In fact he feels GREAT! NO hangover! NO bad side effects. Nothing!*

*The phone rang. It was Sven who asks "How iss you feelin dis mornin?"*

*Ole says, "I feel great. How bout you?"*

*Sven says, "I feel great, too. Ya don't have no hangover?"*

*Ole says, "No dat jet fuel iss great stuff -- no hangover, nothin. Ve oughta do dis more often."*

*Sven agreed. "Yeah, vell, but dere's yust vun ting."*

*Ole asked, "Vat's dat?"*

*Sven questioned, "Haff you farted yet?"*

*Ole stopped to think. "No*

*"Vell, DON'T, 'cause I'm in Iowa*

**Dave's Trikes**  
Roadsmith kits and Conversions

Sale and Installation

Dave Pomeroy  
Pasco, WA

Office 509-547-0725  
Cell 509-531-1116  
Trikes@dpomeroy.com



Caryl Estes

Call me with your order and I will pay your  
shipping and tax  
425-531-0866

view my online catalog @  
[www.WicklessCandleParty.com](http://www.WicklessCandleParty.com)

BUY · HOST · JOIN



# Bow Tie Spinach Salad

## Recommended by: Kathy Bousman

### Bow Tie Spinach Salad

1 16 oz package of bow tie pasta  
4 ounces prosciutto, diced  
1 6 oz package spinach leaves  
salt and ground black pepper to taste  
2 cups fresh basil leaves  
 $\frac{3}{4}$  cup freshly grated Parmesan cheese  
 $\frac{1}{2}$  cup extra virgin olive oil  
 $\frac{1}{2}$  cup toasted pine nuts  
3 cloves garlic, minced



Fill large pot with lightly salted water and bring to a rolling boil over high heat. Once water is boiling, stir in the bow tie pasta and return to a boil. Cook the pasta uncovered, stirring occasionally, until al dente, about 12 minutes. Rinse with cold water to cool. Drain well in a colander set in the sink.

Toss the spinach and basil together in a large bowl.

Heat the olive oil in a skillet over medium heat; cook and stir the garlic in the hot oil for 1 minute; stir in the prosciutto and cook 2 - 3 minutes more. Remove from heat. Add to the bowl with the spinach and basil mixture; toss to combine. Pour in the drained pasta and toss together. Season with salt and pepper. Sprinkle with the Parmesan cheese and pine nuts to serve.

This recipe courtesy of AllRecipes ©

[www.allrecipes.com](http://www.allrecipes.com)



# Nancy's Yummy Crunchy Rhubarb Cake

By: Kathy Bousman

## Crunchy Rubarb Cake

1 ½ cup sugar  
1 tsp baking soda  
½ cup shortening  
¼ tsp salt  
1 egg  
1 tsp vanilla  
1 cup sour cream  
2 cups diced Rhubarb  
2 cups flour



Crunchy topping:

1/3 cup brown sugar  
½ cup flour  
3 tbsp hard butter  
½ tsp cinnamon  
Mix until crumbly (not too long)

Cream sugar and shortening, add egg and beat well. Mix in Sour Cream, flour, baking soda, salt and vanilla. Add rhubarb and mix well. Pour into greased and floured 9 x 13 pan. Bake at 350 for 35 minutes.

## CHAPTER Q "CRAZY RIDE"

By: Ron Johnson

On May 11<sup>th</sup> Chapter E had a scheduled ride to the Chapter Q "Crazy Run" in Tacoma. Those attending were Bill and Caryl Estes, Jim and Christi Pelican, and Ron and Kathy Johnson. Chapter Q did a great job of setting this ride up, with plenty of great food, drawings for merchandise, and a poker style run. The ride was across the Tacoma Narrows Bridge, back roads to Shelton and down to Highway 12. Return was via Nisqually. The roads selected were great as was the weather. Unfortunately this run was poorly attended, which was a shame considering the amount of work and expense to put it on.



**LegalShield™**  
Total access. Total freedom.

o: 425-821-7441

c: 425-471-4886

[williamestes@prepaidlegal.com](mailto:williamestes@prepaidlegal.com)

[www.theestesgroup.biz](http://www.theestesgroup.biz)

**Bill Estes**  
**Caryl Estes**

Independent Associates

Small Business & Group Benefits Specialists

For More Information

Please Call or Visit Our Website

[www.theestesgroup.biz](http://www.theestesgroup.biz)

NYSE - PPD

### NEWSLETTER CONTRIBUTIONS

We would like to offer our thanks and appreciation to those who have made contributions to the newsletter.

Your ride reports, technical stuff, recipes, and humor are what help make your newsletter more enjoyable for all.

Please send your contributions to:

Gordon & Kathy Bousman:

[gbousman44@gmail.com](mailto:gbousman44@gmail.com)



Sun	Mon	Tue	Wed	Thu	Fri	Sat
 Alexandrite June Birthstone						1
2	3	4	5 <b>Chapter E</b> <b>Ice Cream</b> <b>Social</b> <b>Bothell</b>	6	7	8 Chapter D <b>"Duck Hunt"</b> Montesano
9	10	11	12 <b>Chapter E</b> <b>Ice Cream</b> <b>Social</b> <b>Bothell</b>	13	14	15 <b>Chapter E</b> <b>breakfast meeting</b> <b>Bothell</b>
16	17	18	19 <b>Chapter E</b> <b>Ice Cream</b> <b>Social</b> <b>Bothell</b>	20	21	22 Chapter B <b>"Harvest Run"</b> Bremerton
23	24	25	26 <b>Chapter E</b> <b>Ice Cream</b> <b>Social</b> <b>Bothell</b>	27	28	29 & 30 <b>Bob's Omak Loop</b> ride





## GWRRRA Happenings



**June 8th: Chapter D "Duck Hunt"—Montesano**

**June 15th: Chapter E Breakfast meeting—Bothell**

**June 22nd: Chapter B "Harvest Run" - Bremerton**

**June 29 and 30th: Bob's Omak Loop Ride**

### FOR SALE

Men's red First Gear ventilated jacket and pants and women's red First Gear ventilated jacket and pants. Also have a set of XL men's Gerbings heated gloves. All are in excellent condition. All of these are priced at "make an offer".

Contact Jim Roberson [jim.roberson@hotmail.com](mailto:jim.roberson@hotmail.com)



**Cookie Lee**

Fine Fashion Jewelry

Home & Office Shows \* Career Opportunities  
Fundraisers

On-Line Shopping at [www.cookielee.biz/charlenelee](http://www.cookielee.biz/charlenelee)

**Charlene Lee**

Independent Consultant

**206) 595-7070**

[Charlenelee@cookielee.biz](mailto:Charlenelee@cookielee.biz)

Shop the Spring/Summer 2013 line at

[www.cookielee.biz/charlenelee](http://www.cookielee.biz/charlenelee)



(425) 347-4545

(800) 735-7031

215 S.W. Everett Mall Way  
Everett, WA 98204

# LET'S TRY TO SHOW STRONG SUPPORT FOR THE SAFE PLACE

Here is their Press Release:

EVERETT, Wash. -- A unique shelter is now open in Snohomish County so kids don't have to spend hours in the back of a social worker's vehicle when taken into state protection.

"If a social worker removes a child at night, they drive around in cars or take them to Denny's or sit in a parking lot sometimes," said Todd McNeal. "There just isn't a place to take them."

But on East Casino Road, inside what looks like an old office building, is McNeal's sanctuary for at-risk kids 12 and younger, a bridge between home and foster home they call Safe Place.

"I hope the kids feel loved on, snuggled, at ease, safe," said Mary McNeal, Todd's wife.

Six years ago the McNeals took their first foster child into their home, they said, and they never stopped. They've also adopted and taken guardianship over several of their foster children.

"If my heart doesn't break for the kids who come in and out of my home, whose heart is going to break for them?" Mary said.

"We work with foster kids, with poor kids, with immigrant families, " Todd said. "It is our passion to care for children and for those with no voice."

But Saturday's grand opening of Safe Place takes the McNeal's passion one step further. It's their state licensed but volunteer-run and donation-funded shelter for young kids caught in emergency situations.

When police and social workers take kids from dangerous situations, like homes with domestic violence or drug activity, it can often take hours to find proper foster homes for the children, said the McNeals.

"Due to the shortage of foster homes, that can be time consuming," said Todd. "Many times, sibling... are split up, you're just shopping for an empty bed over the weekend. There just simply isn't time at 1 o'clock on a Saturday night to find the right home."

"We would get calls in the middle of the night, usually from frantic social workers who had just picked up a child from a drug bust," Mary McNeal. "It's hard for the kiddos too that get pulled, when they're in the back seat of the social workers car and they hear, 'Can you take Johnny and Susie? Oh, you can't.'"

Located in a renovated medical clinic, Safe Place contains beds, games, toys, clothes and food for the kids. It also has an office space where social workers can continue a search for proper foster placement.

About 10,000 foster kids are in Washington, Todd said, and he hopes Safe Place can eventually serve those in Snohomish, Skagit and Whatcom counties. The McNeals said they and a few other foster families will run Safe Place as volunteers, thought with enough funding, they hope to hire staff. "We would love to see this open 24-7... but we would also love for people to copy this," he said. "We're an open book."



# Safe Place

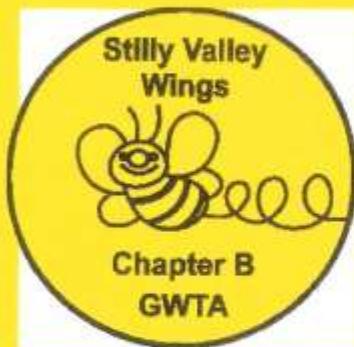
## Rally for Kids

August 3, 2013

1<sup>st</sup> Annual



FUN RUN



100% of proceeds  
benefit Safe Place!  
See Back of flyer>>



CARS WELCOME!

Starting at Everett Power Sports, 215 SW Everett Mall Way, Everett, WA,  
and ending at Cascade High School, 801 East Casino Road, Everett, WA.  
Event day Registration is \$15, (ride, exhibition only) 7:30 to 9:30AM. First  
bike out 7:45AM, last bike out 9:45AM.

### Fundraiser Lunch, Cascade HS, 12-2PM

Chili, All Beef Dogs, Chips, Soda/Water

Available from Kings Riders Chapter of the CMA

### Northwest Wings Motorcycle Drill Team

Exhibition, Cascade HS, 2:30PM

Early mail in registration (ride, exhibition only)-

\$12 Donation; Make checks (no cash) payable to: Safe Place For  
Kids Address: Rally for Kids, 1620 46th St. SE, Everett WA 98203

Tee Shirts



\$15

Donation

W	Cut	Cut	
E	Rider	You will be placed on an	2
L	Co-Rider	Event day list.	3
C	Address	Tee Shirt? Specify	8
O	Email	Qty	4
		Size	1
M	Rider Signature		7
E	Co-rider Signature		5

Those having affixed their signatures above, do hereby agree to voluntarily comply with the appropriate rules governing this ride, and further agree to hold harmless Chapter B, Chapter C, and Safe Place Rally for Kids or any property owners involved in this event, for any injuries, death, or loss of property that might be suffered, as a result of this event. I also agree that I am responsible for any damage, that I may knowingly, or unknowingly cause and maintain the required insurance to participate in this event. Registration is non refundable.





# CHAPTER D'S DUCK HUNT



**JUNE 8, 2013**

BEACON SCHOOL  
1717 BEACON AVE  
MONTESANO WA

**BEER AND PALE**

**FREE DUCK SOUP**

FOR MORE INFORMATION CONTACT:

KERRY BASH: 360-249-4640 [kerrybash\\_786@hotmail.com](mailto:kerrybash_786@hotmail.com)

OR

STEVE CAREY: 360-249-3968 [smcarey@centurytel.net](mailto:smcarey@centurytel.net)

LAST BIKE OUT @ 10:00 AM

LAST BIKE IN @ 3:00 PM

**(NO EXCEPTIONS)**

Preregistration

Rider \$12.50

Co-Rider \$12.50

See Reverse for  
Registration

[www.gwrra-wad.org](http://www.gwrra-wad.org)

Great Silent  
Auction  
Items

Something for  
Everyone

6<sup>th</sup> Annual

Gold Wing Road Riders Association WA-B

# HARVEST RUN



**Saturday June 22, 2013**

**Proceeds to *Holly Ridge Center***

**All Bikes Welcome**

**Lunch & refreshments included**

**Run starts at *The Brothers Power Sports***

**Silent Auction**

5205 1<sup>st</sup> St, Bremerton WA 98312

360 479-6943

**1st Prize**

***Set of 2 Motorcycle Tires Mounted***

**Donated By: *The Brothers Power Sports***

9:00 am First Bike out

10:00 am Last Bike out

2:30 pm Last Bike in

***Prizes awarded shortly after***

***"Must be present to win"***

**Make checks payable to: GWRRA CHAPTER WA-B**

Please send registration form and entry fees to:

GWRRA WA-B ATTN: June Dutton, 399 NW Oakmont Way, Bremerton WA. 98311

Registration Forms can be found online at [www.gwr-ra-wab.org](http://www.gwr-ra-wab.org)

(Separate and return this portion)

Pre-Registration: Rider: \$15.00 Co-Rider: \$10.00 (post marked by 6/1/2013)

On-site Registration: Rider: \$20.00 Co-Rider: \$15.00

Registration: Rider: \_\_\_\_\_

Co-Rider: \_\_\_\_\_

Address: \_\_\_\_\_

Telephone Number: \_\_\_\_\_

City: \_\_\_\_\_ State: \_\_\_\_\_

Zip: \_\_\_\_\_

Chapter or affiliation: \_\_\_\_\_

Chapter or affiliation: \_\_\_\_\_

## AGREEMENT

I/we the undersigned, agree to comply with the rules governing this event and to hold harmless GWRRA, its officers, representatives and event sponsors for loss or injury to person or property I/we may incur by participating in this event. I/we have read and understand this form. Registrants must sign.

Riders Signature: \_\_\_\_\_ Co-Riders Signature: \_\_\_\_\_ Total \$ \_\_\_\_\_

## Chapter E 2013 Parking Ticket Tour

*Parking Ticket Tour open to GWRRA WA-E members only.*

- 1 Ticket per ANY [Washington State Park](#) visited in 2013.
- 1 Ticket per ANY [United States National Park in the USA](#) visited in 2013.

***Requires a safe picture of the rider's motorcycle and the sign of the Washington State or any United States National Park (optional if they want to be in the picture).***

*Co-Riders can submit individual entries with them, the motorcycle and the sign indicating the park.*

*The Photograph of the name of the park must be clearly visible.*

*Each qualifying photograph will be worth 1 ticket for entry into the prize drawing.*

*Final entries must be received by the October Meeting.*

*Entries must be in a printed format.*

*The more tickets you have, the greater your chance of winning prize monies.*

*All tickets will be put into one bucket and there will be three tickets drawn for the prize money. The first ticket drawn will be worth \$100.00, the second ticket drawn will be worth \$75.00 and the third ticket drawn will be worth \$50.00.*

*Need not be present to win, but ALL entries must be submitted by the due date.*

*Prize money will be awarded at the October Meeting.*

*Ride Safe, Ride Far, Ride Often*

*Karla & Scott Edwards*

*Sample Entry:*







**We'd like to extend a warm welcome to our newest chapter members:**

Thomas and Lynn Daniels from Woodinville

Thomas rides a brand new 2012 Blue Goldwing

Lynn rides a Honda 600 Shadow

## Chapter E 2013 Events Calendar

### June

08 - Chapter D "Duck Hunt" fun run in Aberdeen

15 - Chapter E meeting - After meeting ride, Mt. Loop Highway,

14-16 - "Oregon District Rally"

22 - Chapter B "Harvest Run" in Bremerton

29-30 - "Bob's Omak Loop"

### July

03-07 - GWRRA "Wing Ding"

06 - Chapter picnic at the Gustin's

14 - Chapter A "Mystery Ride" in Kent

18-21 - "Washington District Rally" NO CHAPTER MEETING

### August

08-10 - Region I rally in Pendleton, OR

10 - Chapter O "Whale of a Picnic and fun run"

17 - Chapter E meeting - After meeting ride, Hurricane Ridge

24 - Chapter Z "Chicken Run" in Chehalis

## September

- 07 - **Chapter Y "Riddler Run" in Enumclaw**
- 08 - **"Ride for Kids" in Carnation**
- 13-16 - **Chapter E "Whistler weekend"**
- 19-22 - **Chapter P "Oyster Feed" in Long Beach**
- 21 - Chapter E meeting - After meeting ride to NW Trek
- 22- Oyster Run in Anacortes
- 26 - Chapter E dinner social

## October

- 19 - Chapter E meeting
- 19 - District Leadership workshop
- 24 - Chapter E dinner social
- 26 - **Chapter Q "Halloween Dance" in Fife**
- 26 - **Chapter E "Halloween Party" ???**

## November

- 16 - Chapter E meeting - After meeting activity, 2014 planning meeting
- 21 - Chapter E dinner social

## December

- 07 - Olympia Toy Run
- 14 - **Chapter D "Festival of Lights" parade, potluck and auction**
- 15 - Chapter E Christmas party
- 21 - Chapter E meeting, no after meeting activity

*GWTA Chapter E - Lake Washington Gold Presents...*

# **WING WASHINGTON - 2013**

**ALL BIKES AND CLUB AFFILIATIONS WELCOME**

WING WASHINGTON IS A  
PHOTOGRAPHIC TOUR  
WITHIN THE STATE, ON  
YOUR MOTORCYCLE



A VIEW OF YOUR  
MOTORCYCLE AT EACH  
CHECKPOINT IS TO BE IN  
THE PHOTOS ENTERED

**Your \$15.00 *Wing Washington* registration includes:**

## ***LIST OF 25 WING WASHINGTON CHECKPOINT SITES***

### ***Plus 12 BONUS CHECKPOINTS***

The more checkpoints photographed, the more chances to win cash and other prizes - See reverse side for details.

## ***WING WASHINGTON BANQUET - SATURDAY, OCTOBER 12, 2013***

- ➔ \$25 Buffet Dinner with lots of delicious options
- ➔ 4PM at VFW Post 2995, 4330 148th Ave NE, Redmond, WA

***\$100 / \$50 / \$25 CASH DRAWING, BASED ON SITES VISITED***

***CHANCE FOR MANY OTHER GREAT PRIZES***

### ***50/50 DRAWING***

#### **What It Costs**

Ride site list and banquet: \$40.00

Ride site list only (no banquet): \$15.00 (can purchase Banquet or attendance later)

Attend Banquet, but only for tickets & drinks: \$10.00 (no dinner)

Banquet only (no ride): \$25.00 if pre-registered by September 29, 2012

Banquet only, not pre-registered by September 29, 2013: \$30.00 (at the door)



#### ***Benefits LifeWire (formerly Eastside Domestic Violence Program)***

The majority of profits (a minimum of \$500) will be donated to LifeWire (formerly Eastside Domestic Violence Program), the largest provider of services for domestic violence victims in Washington.

**See the *Wing Washington* web site at: [www.WingWashington.com](http://www.WingWashington.com)**



# WING WASHINGTON - 2013

*Wing Washington* is a motorcycling event that will take you, your motorcycle, and your camera to many scenic and interesting locations throughout the state of Washington. We have compiled a list of 25 sites. Themes include: *Haunted Places, Distilleries, Unusual Museums, Middle Schools, and Road Houses* For long distance riders that enjoy a challenge, there are 12 bonus sites comprised of Lakes.

Take a picture of your motorcycle (preferably with you in the picture) at each site you visit. The more sites you photograph the more chances you have to win cash and other prizes at the *Wing Washington* Banquet. Every site is worth one ticket.

Photos must be turned in at the *Wing Washington* Banquet on October 12, 2013. Write the site name and number on back of each site photo, please. Tickets for the cash prize drawings and other prize drawings will be issued to you when your photos are turned in and validated. If you cannot attend the Banquet, have a friend attending the Banquet submit them on your behalf.

The combined entry fee of \$40.00 per person includes the list of 37 *Wing Washington* sites (\$15) and admission to the Banquet (\$25), which is the *Wing Washington* closing event. The Banquet will be held on Saturday, October 12, 2013, 4PM at VFW Post 2995, 4330 148th Ave NE, Redmond, WA, 98052. The site list will be sent to you soon after your registration and entry fees are received, after January 1, 2013. GWTA Chapter E hopes you enjoy participating in *Wing Washington* – 2013. Ride safe and have fun!

**Keep up with Site Updates at: [www.WingWashington.com](http://www.WingWashington.com)**

REGISTRATION	↓	FILL OUT - CUT OFF - MAIL IN	↓	REGISTRATION
RIDER 1				
RIDER 2				
ADDRESS				↑ EMAIL ADDRESSES ↑
CITY		STATE		ZIP
CLUB AFFILIATION, IF ANY		CHAPTER		TELEPHONE ( )
Payable to: <b>GWTA-CHAPTER E</b>   Mail to: <i>Wing Washington</i> , Jerry Weltner, 7708 147 <sup>th</sup> Ave NE, Redmond, WA 98052				
(√)	(Qty)	(Sub-total)		
Site list and banquet	@ \$40.00 = \$			
Attend Banquet, drinks & tickets	@ \$10.00 = \$		(Does not include dinner)	
Banquet only (not going to sites)	@ \$25.00 = \$		(At-the-door price for Banquet - \$30.00)	
Site list only (dinner at extra cost)	@ \$15.00 = \$		(Can purchase Banquet or attendance later)	
TOTAL = \$				

I/We the undersigned, agree to and will comply with the rules covering this event. I/We further agree to hold harmless the GWTA, its officers and representatives, or persons sponsoring this event for loss or injury to property or myself incurred by reason of participation in this event. I/We have read and understand the above.

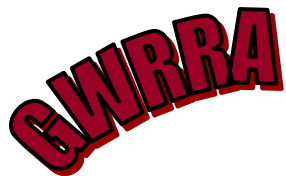
Rider 1 signature

Rider 2 signature

# GWRRA WASHINGTON MEETINGS

4th Saturday	8:30AM	A-Seattle	Old Country Buffet, 25630 104th Ave. SE, Kent, WA 98030
1st Saturday	8:00 AM	B-Bremerton	Rolling Hills Golf Course, 2485 NE McWilliams Rd, E. Bremerton, WA <b>NEW</b>
2nd Saturday	8:00 AM	C-Everett	Denny's, 132 128TH St. SW, Everett, WA 98204
2nd Sunday	8:30 AM	D-Aberdeen	Duffy's Restaurant, 1605 Simpson Ave, Aberdeen, WA 98520
3rd Saturday	08:30AM	E- Bellevue	Crystal Creek Café, 22620 Bothell-Everett Hwy. Bothell, WA. 98021
2nd Tuesday	6:00 PM	H-Lynden	Fairway Restaurant, 1726 Front St, Lynden, WA 98264
3rd Sunday	8:00 AM	I -Olympia	Hawks Prairie Restaurant, 8306 Quinault Drive NE, Lacey, WA 98516 <b>NEW</b>
2nd Saturday	9:00 AM	L-Kennewick	Pasco Eagle Club, 2829 W. Sylvester, Pasco, WA 99301 <b>NEW</b>
1st Saturday	12:00 PM	M-Yakima	Legends Casino 580 Fort Road Toppenish, WA
3rd Sunday	8:30 AM	N-Spokane	Golden Corral Restaurant, 7117 N Division, Spokane, WA 99208
4th Saturday	8:00 AM	O-Port Orchard	Airport Diner, 8803 State Hwy 3 SW, Port Orchard, WA 98367
3rd Saturday	1:00 PM	P-Longview	Sizzler, 936 Ocean Beach Hwy., Longview, WA. 98632
1st Wednesday	6:00 PM	Q-Puyallup	Sizzler Restaurant, 10204 South Tacoma Way, Tacoma, WA <b>NEW</b>
1st Saturday	9:00 AM	R-Walla Walla	Oasis Restaurant. Old Milton-Freewater, OR 97862
1st Thursday	6:00PM	V-Auburn	The Station Bistro, 110 2nd St SW, Auburn, WA
1st Saturday	8:30 AM	X-Vancouver	Hometown Buffet, 7809 B NE, Vancouver, WA 98686
2nd Friday	6:30 PM	Y-Enumclaw	Krain Corner Restaurant, 39929 264th SE, Enumclaw, WA 98022
2nd Saturday	1:00 PM	Z-Centralia	Centralia Deli, 708 Harrison Avenue. Centralia, WA 98531 <b>NEW</b>

# GWRRRA DISTRICT & REGION INFO



Gold Wing Road Riders Association—[www.gwrra.org](http://www.gwrra.org) Mike Stiger, Director



Washington District Staff

<http://www.gwrra-wa.org/>

WA District Directors Susie & Frank Hutchinson

Asst. District Directors Reggie Baumer and

Chuck Porter

Asst. District Directors Wally & Anna Wallingford

District Treasurer - Brad Kane

Membership Coordinator—Gerry & Maxine Alexander

District Rider Educator - Mike and Lynn Briggs

District Rider Educator Stores— Tom Denny

District Leadership Trainer - Roy & Pearl McKenzie

Asst. Rider Education—Vacant

District Ambassadors— Jerry & Judy Thompson

District Stores - TBD

District Webmaster - Patrick Alison

District Couple of the Year - Mike & Janet Turner

District IOY/COY Coord. - Mike & Janet Turner

District Newsletter Editor - Brad Kane

District Motorist Awareness Coordinator - Doug Clark



Region I Staff

<http://www.bigskyregioni.org/>

Region Directors - Mike and Peggy Hudnell

Assistant Directors - Dale and Shirley Dufner

Assistant Directors - Terry and Cheri Huffman

Assistant Directors— Russ and Laurie Parpart

Instructor Coordinators—Eric Carlson

Rider Educators—Bob and Becky Minor

Motorist Awareness - Dave and Sheila Chavez

Treasurer - Erv and Phyllis Granahan

Membership Enhancement Coordinator - Garry Alexander

Leadership Trainers— John and Diane Kester

Region I Ambassadors - Tom and Mozelle Edwards

Region I Ambassadors - Hank and Marilyn Smith

Couple of the Year Coordinators— Dan and Carmen Weakland

Couple of the Year - Mike & Janet Turner

Webmaster - Scott Bowman

Newsletter Editor— Shirley Dufner



## Advertise with us

Corporate: \$100.00 per quarter.

Medium (½ pages): \$50 per quarter.

Small (business card): \$25 per quarter

Rates above are per quarter. All interested companies should inquire with Bob Spencer at: [bspswae@frontier.com](mailto:bspswae@frontier.com)

**Special Reminder: Don't forget to look for your membership number hidden somewhere in our newsletter. If you find your number, this could mean \$ for you if you tell us at the Chapter E meeting of the month of the newsletter. We encourage you to identify yourself at the meeting.**



If you have pictures to add to the Chapter E Website, please email John Smith, Chapter E Webmaster at [allabout@frontier.com](mailto:allabout@frontier.com)