

The Eagle News

- October 2012 -

GWRRRA



WA-E

Bellevue, WA



"Friends for Fun, Safety and Knowledge"

Contents

Directors Message	2
Birthdays & Anniversaries	4
Eagle Oops Award	5
Rider Education	6
Short Takes & Mileage Contest	10
Date Night	11
Halloween Party & Industry news	12
Labor Day Camping Trip	13
Weird Vehicles from the Past	17
Feature Article: Whistler 2012	18
Whistler Memories	25
Fall recipes	26
Church Bulletins	28
October Calendar	29
Happenings & Events	30
A little more humor	31
Household hints and tips	32
Event Flyers & Mileage Contest	33
GWRAA Washington Meetings	38
GWRAA Chapter & District Staff	39

Chapter Staff

Chapter Directors: Bob & Patty Spencer
Assistant Chapter Directors: Bill & Caryl Estes
Chapter E Educator: Mike Briggs
Ride Director: Bob Spencer
Treasurer: Charlene Lee
Cares & Concerns: Leah Gray
Dinner Socials Coordinators: Bill & Caryl Estes
Membership Coordinator: Violet Urquhart
Mileage Coordinators: Karla & Scott Edwards
Newsletter Editors: Gordon & Kathy Bousman
Web Designer: John Smith
Store Managers: Ron & Kathy Johnson
Historian/photographer: Ron & Kathy Johnson
Chapter Greeters: Ron & Violet Urquhart



GWRRA



WA-E

October, 2012 Gold Wing Road Riders Association Region I - WA District



"Friends for Fun, Safety and Knowledge"



Next Meeting: October 20, 2012

Crystal Creek Café

22620 Bothell-Everett Hwy.

Bothell, WA. 98021



Here it is October. The Oyster Run has come and gone and our annual Chapter E Whistler trip is behind us. Fall is officially here. The cool mornings and low afternoon sun is a true indication that summer is winding down, although you wouldn't know it by our fabulous weather. Be sure to take advantage of it. Get out and ride as often as you can, because it is inevitable that the rains will soon be upon us. When the weather finally does close in on us, don't be discouraged. The next few months bring lots of fun opportunities to get out and have some fun with all your GWRRA friends albeit without the bikes.

In October we have the "Fall Colors" ride and our breakfast meeting on the 20th. On the 25th we have our first official winter dinner social at the Olive Garden in Totem Lake, where Scott and Karla will announce the winners and hand out prize money for this year's "Washington Post Office Tour". Then on October 27th the Bousman' will host our annual Halloween party at their beautiful new home. All that and it's just October!

Who said that things slow down in the winter months? November brings the "District Leadership Conference" on the 3rd. This workshop is designed to help chapter officers and staffs sharpen their skills and to help prepare any member interested in taking a position in the future. All members are welcome to attend and I would like to see all chapter E staff attend this workshop. The chapter will pay for your registration. We also have a dinner social scheduled on the 15th (location to be announced in the "Eagle Eye" and our November breakfast meeting is on the 17th followed by our "Ride calendar" planning meeting for the upcoming year. Patty and I are also trying to pick a date in November, for a chapter staff meeting, to map out the direction for chapter E in 2013. We will eventually be asking you for some input for this meeting.

I heard this week that Christmas is less than 90 days away. Wow did that surprise me. I guess we need to start planning our chapter Christmas party. We will talk about it at the next meeting. Also, mark your calendars for December 8th. We will be putting a trip together to attend the Montesano "Festival of Lights" parade. Chapter "D" always participates in this event with a group of decorated bikes and several other chapters always join them. There will be more information out on this as it becomes available. Last, I just want to touch on the "Dinner and Movie Date Night" last weekend. It was a success and a lot of fun, so we plan to do it a couple more times this winter, but Jimm Burk had a great idea to change it up a bit. There is a theater in Mountlake Terrace called "Cinnebar" where they have table seating for the movie and you can order dinner and a beer, or wine and eat while you're watching the movie. The movie ticket prices are the same as a regular theater and the dinners (appetizers, salads, sandwiches, burgers, etc) are priced competitively. I think we'll give it a try. Watch the "Eagle Eye" for dates.

Bob and Patty





October Birthdays

Karen Roberson	10
Don Hopkins	13
Jimm Burke	15
Jim Pelican	25
Kathy Johnson	31

.....And a special birthday wish to Mike Keefe, the only person that we know who has two birthdays in one year. Here you see Mike celebrating with his twin brother Bob



October Anniversaries

Bob & Patty Spencer	4
Doug & Sandy Newbury	6
John & Barb Smith	22
Russell & LeeAnn Greaby	31



If we have missed any announcement, birthday or anniversary please email Leah Gray or Bob & Patty Spencer with dates, names and information. If you have pictures and/or stories, please attach them to your email.

©Cares & Concerns: Please remember to inform Leah Gray of any cares or concerns you may have or if you are aware of other members in need of support. If someone is ill or incapacitated or simply is in need of a friendly hug or support, please let us know. We really do want to know if you are OK or in need of anything.

Bob & Patty Spencer - bspwae@frontier.com

Leah Gray - lsfvr57@aol.com

THE EAGLE OOPS AWARD



PREMATURE EVACUATION

The latest recipient of the Eagle Oops award is Ron Johnson. It seems that Ron was a little too anxious to get off the ferry when riding back from the recent Forks ride. As you know, bikes are the first to come **off the ferry but....you're supposed to wait for the ferry crew to give the O.K. to disembark.** However maybe Ron had visions of getting home ASAP and was on the throttle before the O.K. was given and prematurely **departed the ship. Good thing he couldn't hear the yelling of the ferry crew as he blasted off into the sunset in a cloud of dust.**



Ron Johnson



LEHMAN TRIKES PURCHASED BY CHAMPION TRIKES

Here's some good news for those riders who own a Lehman trike: They were purchased by Champion Trikes in late June and operations have resumed at the Lehman plant in Spearfish, SD located just west of Sturgis. The initial focus following the acquisition was to fulfill a backlog of parts orders for current Lehman customers and then move into resuming full trike kit production. Many of you may know that Lehman Trikes had been up for sale since last year and had shuttered operations for a period of time when a previous investor declined to go through with acquiring the company—this being coupled with the unfortunate death of the company's founder, John Lehman in January.

The new combined company will become the largest manufacturer of trike conversion kits for Honda Goldwing, Harley-Davidson, Victory, Suzuki, and Kawasaki bikes. The South Dakota facility will be the center of trike kit production for Champion while their California facility will concentrate on producing sidecar kits. Full manufacturing operations resumed at the Spearfish operation in early September. This is really good news for the industry with the present challenging economic conditions.

Captain Ron and Violet Urquhart have started a business to provide embroidery for the chapter shirts. If you are interested in getting that done, please bring the article of clothing that you want the work done on to a chapter meeting and provide that to them. You can contact them by email (highlandembroidery@gmail.com) for pricing and availability or call 425-512-9498



Ron & Violet Urquhart

Quality Embroidery & "Textile" products

Highland Embroidery

Email: highlandembroidery@gmail.com
Phone: 425-512-9498
Lake Stevens, WA

Facebook

MADE IN USA



Can I Get There from There?

Rider Education by Mike Briggs



As many of you know, I really enjoy what is known as LD riding (long distance). That and my past record of not getting the Wing Washington Photo Tour completed, compelled me to plan a ride to try and complete the last 15 checkpoints last weekend. I planned and figured and adjusted and finally decided that, yes, I could make this work.

This ride was actually scheduled for the middle of July with a backpacking trip for last weekend but as you know, the weather has not been cooperating so I flip flopped the weekend's activities at the last minute (Friday night, madly pulling things out of the backpack and loading the bike). So, it's an early morning leave and on to Eastern Washington for a long, fun day of riding, checkpoints and eventually, camping somewhere in Northeastern Washington. The day started well with the first checkpoint north of Leavenworth bagged at 7:45 AM



I was thinking, not bad, this will go well. Fast forward to Republic and that's where I started to waver, I knew that I was not far from the chapter in Grand Coulee and I certainly wanted to head south to see everyone, but I kept saying to myself, "stick to the plan, stick to the plan"! So I continued eastward towards Kettle Falls.



I reached Kettle Falls and turned south towards a place called Fruitland. Once I took my picture at Fruitland, I had to make a choice,



I thought about fuel management, the time of day, the miles, how tired I was and where I might find a place to camp. When you stop and think about it and where I was at the time, that is a lot to consider and I **was burning daylight. I separated out all of these things and answered them one at a time. I wasn't particularly tired but I was 500 miles into my day and my decision making wasn't going to be as sharp as it was earlier in the day.** While there was still plenty of daylight, I knew that I would burn up an hour setting up camp and the time to get there. Speaking of there, I knew of a DNR campground outside of Colville that I **had camped at in 1984. I didn't know if it was still there, or if I could even find it, but that made the most sense instead of pushing further for the day.** Last was fuel management. I had a fair amount of fuel but I had fuelled in Omak and I had 175 miles or so on this tank. I figured how far it was to Colville and decided **that a "spirited ride" was not the best style for this leg of the trip. In addition, I had already sighted many deer and a large bear crossing the road in front of me.**

Off I went, headed north toward Colville. Funny thing, I never got a fuel light so there was never a concern. After I fueled, I headed in the direction that I thought the campground was. I pretty much rode right to it and it was still there and free! Wow, it is still a nice little place. The campground host was very nice and even delivered some firewood, and kindling, again, all free! Granted, this is a fairly primitive campground, no showers, pretty decent pit toilets and running water, but for me riding solo, it was perfect.



I cooked up a little dinner had an adult beverage, ok, I had two adult beverages.... and sat in my Kermit chair taking in the day and the wonderful campfire. It had been a pretty great day!

The next morning, I woke up at around 5:00 AM and started to think about making some coffee when I **heard a rumble... The sky through the trees was pretty dark and I shifted into high speed packing everything up and preparing the bike in about 35 minutes.** I was putting my overpants on when it started to rain. No worries, I was warm and dry on the inside so off I rode towards Ione, WA for the first checkpoint of the day. I ended up splitting the storms and getting to Ione pretty much dry.



Off I headed for Spokane and warmer, dryer weather. Well that was not to be as I hit a pretty strong squall. I was almost to the small town of Usk when the skies opened up and the rain was as hard as anything that I have experienced in 40 years of motorcycle riding. As luck would have it there was a recently completed building to the right with an overhang so I rode right under the cover and took a break. For about 15 minutes it rained very hard and I decided that I had made a great decision to stop and wait this out. Finally, the sky lightened and the rain slowed down. Off I went headed south again. After picking up a checkpoint in Spokane



The weather got much better and warmer as I headed across the basin to the small town of Wilbur



Finally I got to Quincy and I made a decision, I would skip the last two checkpoints of the day and head directly home.

It was quite warm and I was getting pretty tired. I had picked up 13 checkpoints and seen some great country in our own state. But it was time to get home, it was time.



So while I have enjoyed sharing with you about my ride, what does this have to do with Rider Education, you ask. Oh yea, I forgot to tell you, I told Bob Spencer that I would like to write a rider education article while the chapter is in transition from John to Bob.

So here is the tie in. Even though I had planned pretty well, many other factors enter into the ride. I had the proper riding gear so I was warm and dry in the rain, I was cool when it got to **the mid 80's and while I rode quite a distance, I "rode my ride" and was willing to make adjustments** to the ride. I knew that it was getting pretty late in the day on Saturday and animals would soon be more numerous, I made a decision to pull over when the weather was so bad that **I couldn't see well and I took the time to change out my riding gear when it got warm so that I** would have been uncomfortable in my heavy jacket. I also made the decision to not complete the last two checkpoints of the day because I was getting tired and was ready to head for home. The biggest factor of this ride was that I was by myself. This really affected my decision making. Just one more thing to think about.

Every ride you take is based on decisions, how to manage your risk as you ride. While the trip **I took that weekend isn't for everyone, I was constantly managing my risk. Managing risk is not one action; it's a continuous thought process.**

So as you ride, even if it's a short ride to the store or up to the motorcycle shop, consider all risk factors so you will make good decisions and enjoy the ride!

Editor note: Mike Briggs will be installed as our new Chapter E Educator by district and region educators at our upcoming Chapter meeting on October 20th. We hope that all members can attend the meeting to welcome Mike to our chapter staff.

Short Takes



Here's a new product that allows a rider to interface the audio from a mounted GPS to a GL1500 or GL1800 Goldwing intercom so that GPS spoken instructions (including GPS audio from a smart phone) can be heard in the helmet headset. It includes a ground loop isolator so that hum or alternator noise is cancelled out. This is for Goldwings without the built-in Navigation. It also works with Laser/Radar detector audio output. The GPS audio will not be heard in the speakers, only via the headset intercom. The benefit is that the rider can depend on listening to turn-by-turn spoken instructions and not depend on looking at the GPS screen as much. This device can be found for approximately \$60 at Cyclemax.com or GoldwingDocs.com.



POST OFFICE TOUR UPDATE

As summer is all too quickly coming to an end so is our Post Office Tour. Final submissions are due October 20th at the Chapter Meeting. Emails will NOT be accepted. Please refer back to the newsletter for the official rules and cash prizes. I don't know about you but I have seen the heart of Washington State by visiting many of the 608 post offices with as many stories to share about the ride along the way. Winners will be announced at the October Dinner Social on Oct. 25th at the Totem Lake Olive Garden.



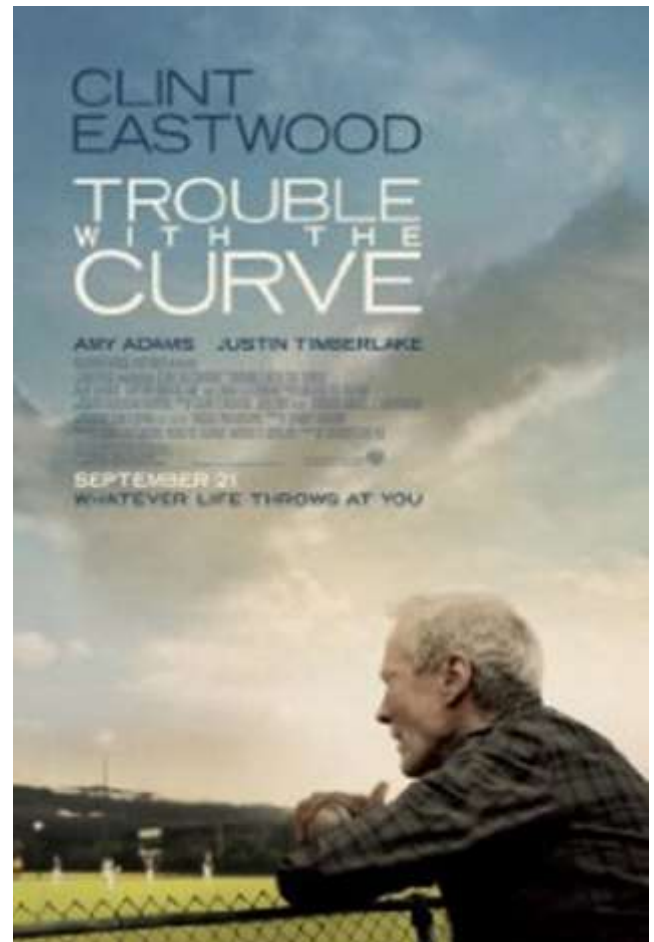
Ride safe and Ride far!

Karla Edwards

Chapter "E" Date Night - What a concept

By: Bill Estes

A good time was had by all... Saturday, September 29, 2012 Chapter E members had a movie and a dinner date afternoon/night get-together. The afternoon started off **meeting at the Alderwood Cinemas and watching a nice movie, "About the Curve"**. Afterwards, we all went to the Alderwood Mall Food Court and had dinner as a group. We all had fun and enjoyed each others company and the meal of your choice. We ended the evening on a good note and are looking forward to getting together **again at the Chapter E Annual Halloween Party being held at the Bousman's. Next time we have another date afternoon/night get-together lets see how many more members we can have join us. See you all soon.**





Chapter E 2012 Halloween Party

October 27th



- The costume theme for this year will be a pajama party—wear your most **outrageous pajama's to this year's party**—and of course traditional Halloween costumes are also welcome—**or even if you don't dress up, you are still very welcome.**
- **This year's party will held at the Bousman home—** 22727 165th Avenue SE, Monroe, WA 98272 located off of High Bridge Road between Duvall and Monroe on Saturday, October 27th at 6:00 PM
- Please bring a potluck dish - Salad, snacks, or desert. The Main course will be **provided by the Bousman's**
- Final details and driving directions will be sent out in an email prior to the party

INDUSTRY NEWS FROM EVERETT POWERSPORTS

Recently announced by American Honda are the 2013 Gold Wings. It appears they will not be mechanically different from the 2010 Gold wing but with two new colors, to put a little frosting on the cake.



If you haven't seen the limited production CB 1800 RR which is in Cedric's shop, it will likely be showing up the Seattle Motorcycle Show this year.

We hope to see some of us at the Wing Washington Banquet at the Bellevue VFW on Oct 13 at 4 P.M

Coffee pot is always one,
Ride safe !

Mike



Labor Day Camping, Hart's Pass and Slate Peak

By: Karla Edwards

Over Labor Day Scott and I rode some dirt in the Methow Valley which is generally centered near **Winthrop about a 100 miles north of Wenatchee.** Hart's pass is the highest drivable point in Washington. The road was built in 1893 leading to silver and gold mines and is a very narrow winding road hanging over cliffs of breathtaking views. The road interfaces with the Pacific Crest Trail along the 20+ miles up to the top where the road then comes to an end and there is a short ¼ mile steep hike to reach the fire lookout atop 7440 ft. Slate Peak where you will find expansive breathtaking views!



Picture at the end of the road on Slate Peak



Shafer Museum in Winthrop, definitely worth spending some time looking around.



Looks like an old fire engine to me!



The long road up to the top of Slate Peak: 20+ miles



The road then comes to an end and there is a short ¼ mile steep hike to reach the fire lookout atop 7440 ft. Slate Peak where you will find expansive breathtaking views!





Breathtaking views at the top and as you see below the dirt road that will get you here!

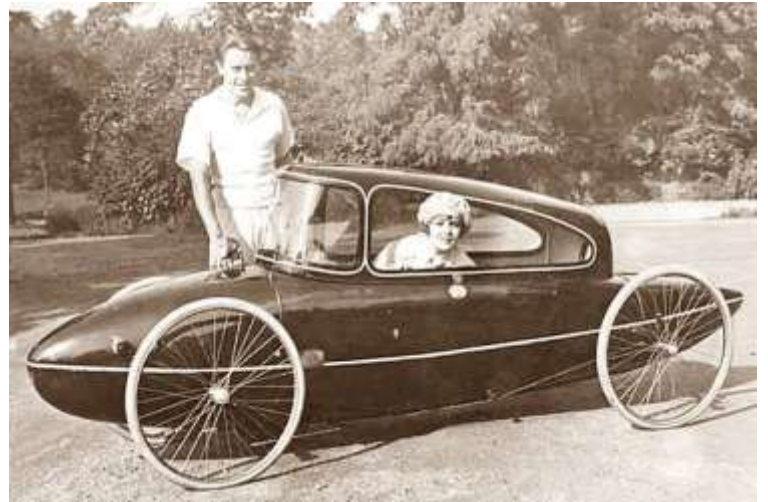


This summit was originally 40' higher however the Air Force blasted the summit to create a radar station unfortunately the project was declared obsolete before completion and what remains is a huge flat summit now with a fire lookout structure built in 1956.



This is a drivable road to most vehicles but be prepared for road washouts, landslides, narrow road with soft shoulders and plenty of patience. You will be rewarded at the end should you make the journey.

WEIRD VEHICLES FROM THE PAST



Laughter



I once won an argument
with a woman...
in this dream I had.

I want one of those
jobs where people ask,
"Do you actually get
paid for doing this?"

If there was a way to read
a woman's mind, I am not
sure I would want to. I
hate shoes, shopping,
gossip, and I already know
I am annoying.

Ladies, if a man says
he will fix it, he will.
There is no need to
remind him every 6
months about it.



WHISTLER 2012 WEEKEND RIDE

By: Gordon Bousman

The Chapter E 2012 Whistler Ride was a real success by anyone's standards including the fact that the weather was just about perfect with pleasant daytime temperatures and clear sunny skies. This trip was a new experience for this author and I thoroughly enjoyed myself as I joined my wife Kathy as we rode our two GL1800 trikes for a memorable long weekend trip to Whistler, B.C.

Kathy and I joined up with the main group ride early on Friday morning at the usual Starbucks meeting point in Bothell. The ride was led by Dave Chavez with Bill and Caryl Estes acting as the tail-gunners along with Sheila Chavez and LanaJo Peck in the chase car as we went up I -5 to Bellingham where we picked up highway 529 to cross the Canadian border at Lynden, WA. We picked up the Trans-Canada Highway #1 soon after entering Canada and proceeded towards Vancouver. Traffic was a bit hectic with some stop-and-go backups due to road and bridge construction in the greater Vancouver area however once we cleared Vancouver, the ride became enjoyable again. I was without an operating CB on my bike so I quickly learned to maintain vigilance in my mirrors for group lane changes and managed to not screw anything up for the group.

The group stopped for nice lunch at the Trolls restaurant in Horseshoe Bay where we had views of the bay and the ferry boats arriving and departing for Vancouver Island - an absolutely beautiful setting with the high hills on the sides of the bay nicely framing the water view.



Following our lunch break, we started off on the final leg of our ride up to Whistler. The views and the ride were spectacular as we rode the Sea-to-Sky highway northbound with views of the bay on our left side. The twisties were numerous and added more enjoyment to the ride. We arrived at Whistler mid-afternoon and after putting the bikes away, we took a bit of downtime to rest and then began exploring the many shops and venues. We made some contributions to the local economy as we acquired some touristy shirts, hoodies, and jackets. Later, Kathy and I enjoyed a very enjoyable dinner with Leah and David sitting at an outside table on a very pleasant evening as we also enjoyed people watching in what was a fairly busy weekend. I noted that many locals seem to enjoy bringing their dogs out for a walk in the Whistler complex.

Saturday morning began with a delicious breakfast again sitting at an outside restaurant table while enjoyed the start of another sunny day. Later we did some more shops exploring with some of the Chapter E members followed by watching the Mountain bike weekend event get underway. The mountain bikers were practicing for their weekend contest which had about \$10,000 in prizes. It was interesting to watch them travel up on the mountain side putting their bikes in one chair lift and then jumping on the following chairlift. Others were seen jamming their mountain bikes into one of the gondola cars for the ride up the mountain. I noted that that an ambulance or aid car seemed to be keeping busy going up and down a mountain dirt road beside the bike trails.



We later enjoyed a nice lunch with some of the group followed by a bit more exploring and an afternoon nap break. Saturday evening saw the entire Chapter E enjoy a group dinner at Earl's Restaurant where we had awesome evening meal which included celebrating Mike Keefe's birthday (Mike: Was it really your birthday or are you just into multiple celebrations ?) Some of the group went on to sample some of the night life while a few of us old folks ;-) crashed for the evening.



The Saturday Evening Chapter-E Dinner crew and a post-dinner group photo

Sunday morning brought more sunshine and began for us by joining Ron & Kathy Johnson and Karla & Scott Edwards for a ride up Whistler Mountain on the Whistler Village gondola ride. This was an enjoyable experience for me to take in the awesome views especially as I looked backwards and watched us lift skyward with the Whistler village complex growing smaller below us. The visibility was unlimited and we could see for long distances, views of the absolutely beautiful mountain ranges. We took some downtime at the top of the 6000 foot mountain to sit and absorb the views from the outside seating of the mountain top restaurant. The two **Kathy's then took a walk around the mountain top lake (which is used in the wintertime to provide water for snow making)** while I enjoyed a pleasant conversation with Ron Johnson. Later we took the Peak-to-Peak ride to Blackcomb Mountain. The ride takes 11 minutes and is nearly 3 miles in length. The 28 gondola cars are spacious and several cars include glass bottom windows which allow views down into the 1400 foot valley between the two mountain tops. Returning back to the starting point, we enjoyed a nice lunch sitting outside at the mountain top restaurant with Ron & Kathy Johnson before starting the trip back down to Whistler Village below.





Late Sunday afternoon found a number of our adventurous chapter members partaking in a Zip Line adventure. I had to miss this event due to a back injury but my Kathy joined the group and reportedly was heard to be yelling "wee" on some of the Zip runs....and then there was a report that Kathy Johnson and others were observed zipping along upside down on the last run! You daredevils !



The wild and crazy Chapter-E Zip-Line crew at Whistler. The two people at the bottom of the picture are the Zip-line staff members and two folks at middle right were another couple that joined the group

Kathy and I had decided that we wanted to experience the long route home from Whistler and so we were up very early and had our two bikes loaded and out of the garage by 7:00 AM Monday. We drove highway 99 north thankful that we had brought along our heated gear as the temperatures dipped in the mid-30's in a portion of the run up to Lillooet, BC. **It was an incredible experience for a couple of** relative newbie riders to ride on our bikes amongst the hills and mountains, absorbing the gorgeous views with plenty of turns and twisties along with some moderate elevation climbs and descents. We noticed a large movie crew setting up their camera equipment at the east end of Seaton Lake just west of Lillooet and wondered what movie they might be working on. We took our first rest break in Lillooet taking off the first layer of gear as by now the sun was fully up with another day of beautiful clear skies.



Leaving Lillooet, we picked up highway 12 southbound along the east side of the Fraser River. The views of the river valley were exquisite and the road was in mostly good condition except one place where a large slide had the road down to one lane for a short stretch. At Lyton, we picked up the two-lane Highway 1 and stopped for a roadside picnic lunch about halfway to Hope. Arriving in Hope, we picked up the four-lane TransCanada highway and made really good time westbound to Canada highway 11 which we rode the short distance southbound to the USA border at Sumas, WA. We made it through the checkpoint in less than ten minutes and started our final leg home on highway 9. We enjoyed the views of the countryside as we made our way south past the west side of Mount Baker towards Sedro-Woolley for a mandatory stop for ice cream. We arrived home 353 miles after starting out in Whistler, taking 9 -1/2 hours, a bit tired and our longest day ride so far for two still relatively new riders. I had figured **that this ride would take 8 hours and was a bit perplexed about the missed time "guesstimate"** but believe that trikes cannot make as good time as two-wheel bikes considering all the twisties that were involved. Still, it was an awesome experience and one that we would like to enjoy next year again on our trip to Whistler.

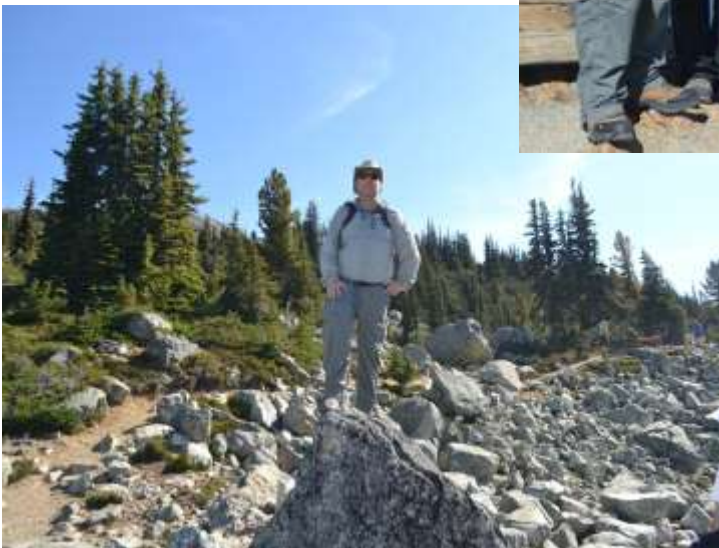
We had a blast at Whistler, it left me with many pleasant memories, especially the friendship with a **great group of people and I look forward to next year's return to Whistler. Special thanks goes to our chapter leadership who organized this great event, especially Barb, Bob & Patty.** Until next year....I'll enjoy revisiting our 2012 Whistler trip looking at all the great photos taken this year.

WHISTLER MEMORIES

By: Karla Edwards



LOST LAKE



Fall Recipe

By: Kathy Bousman

German Leek and Potato Soup

Prep Time: 15 Min

Cook Time: 50 Min

Ready In: 1 Hr 5 Min

Serves 8

Ingredients

1 cup chopped onion

1/2 cup butter

- 1 cup chopped leeks
- 8 potatoes, peeled and sliced
- 6 cups water
- 1/2 teaspoon fresh thyme
- 1 ham bone
- 1 cup heavy cream

salt and pepper to taste

Directions

1) In a large pot over medium heat, cook onions in butter until translucent. Stir in leeks, potatoes, water, thyme and the ham bone. Bring to a boil, then reduce heat, cover and simmer until potatoes are tender, 20 to 30 minutes.

2. Remove ham bone and puree soup with a blender or food processor. Return to pot, stir in cream, salt and pepper, heat through and serve.



Fall Recipes

By: Kathy Bousman

Jagerschnitzel

Prep Time: 15 Min

Cook Time: 25 Min

Ready In: 40 Min

Ingredients

- 1 cup bread crumbs
- 1 tablespoon all-purpose flour
- salt and pepper to taste
- 2 tablespoons vegetable oil
- 4 pork steaks or cutlets, pounded thin
- 1 egg, beaten
- 1 medium onion, diced
- 1 (8 ounce) can sliced mushrooms
- 1 1/2 cups water
- 1 cube beef bouillon
- 1 tablespoon cornstarch
- 1/2 cup sour cream

Directions

1) In a shallow dish, mix together the bread crumbs and flour. Season with salt and pepper. Place the egg in a separate dish. Heat oil in a large skillet over medium-high heat. Dip pork steaks in egg, then coat with the bread crumb mixture. Fry in the hot oil until browned on both sides and cooked through, about 5 minutes per side.

2) Remove the pork to a platter and keep warm. Add onion and mushrooms to the skillet and cook until lightly browned. Pour in water and dissolve the bouillon cube. Simmer for about 20 minutes. Stir together the cornstarch and sour cream; stir into the skillet. Cook over low heat until thickened but do not boil. Spoon over the pork cutlets and serve immediately.



Laughter Factor

Actual Items from Church Bulletins

"The *Fasting and Prayer Conference* includes meals."

"The sermon this morning: 'Jesus Walks on the Water.' The sermon tonight: 'Searching for Jesus.'"

"Ladies, don't forget the rummage sale. It's a chance to get rid of those things not worth keeping around the house. Bring your husbands."

"The peacemaking meeting scheduled for today has been canceled due to a conflict."

"Don't let worry kill you off - let the Church help."

"Next Thursday there will be tryouts for the choir. They need all the help they can get."

"A bean supper will be held on Tuesday evening in the church hall. Music will follow."

"At the evening service tonight, the sermon topic will be "What Is Hell?" Come early and listen to our choir practice."

"Eight new choir robes are currently needed due to the addition of several new members and to the deterioration of some older ones."

"Scouts are saving aluminum cans, bottles, and other items to be recycled. Proceeds will be used to cripple children."

"Please place your donation in the envelope along with the deceased person you want remembered."

"The church will host an evening of fine dining, super entertainment and gracious hostility."

"Potluck supper Sunday at 5:00 PM - prayer and medication to follow."

"The ladies of the Church have cast off clothing of every kind. They may be seen in the basement on Friday afternoon."

"Ladies Bible Study will be held Thursday morning at 10 AM. All ladies are invited to lunch in the Fellowship Hall after the B. S. is done."

"Low Self Esteem Support Group will meet Thursday at 7 PM. Please use the back door."

"The eighth-graders will be presenting Shakespeare's Hamlet in the Church basement Friday at 7 PM. The congregation is invited to attend this tragedy."

"Weight Watchers will meet at 7 PM at the First Presbyterian Church. Please use large double door at the side



LegalShield
Total access. Total freedom.

o: 425-821-7441

c: 425-471-4886

williamestes@prepaidlegal.com

www.theestesgroup.biz

Bill Estes

Caryl Estes

Independent Associates

Small Business & Group Benefits Specialists

NEWSLETTER CONTRIBUTIONS

We are always in need of contributions to your newsletter. Ride reports, technical stuff, recipes, jokes, etc. are always welcome and appreciated.

Please send to: Gordon & Kathy Bousman: gbousman44@gmail.com

For More Information

Please Call or Visit Our Website

www.theestesgroup.biz

NYSE - PPD



October



Sun	Mon	Tue	Wed	Thu	Fri	Sat
<i>October</i> Opal or Tourmaline 	1	2	3	4	5	6
7	8	9	10	11	12	13
14	15	16	17	18	19	20 Chapter E Breakfast Meeting—after meeting Fall colors ride
21	22	23	24	25 Dinner Social Olive Garden Totem Lake (Post Office winners announced)	26	27 <i>Chapter E Halloween Party at Bousman Home Monroe, WA 6:00 PM</i>
28	29	30	31 Boo !			



GWRA Happenings



Oct 2012 Calendar of Events



October 20th — Chapter E meeting with after-meeting Fall colors ride (weather permitting) or tour of Seattle underground if raining. Post Office tour contest entries due at this meeting.

October 25th: Dinner Social at Totem Lake Olive Garden @ NE 124th Street. Winners of the Post Office Tour will be announced with cash prizes

October 27th: Chapter E annual Halloween Party
Bousman Home, Monroe, WA



The first sign of fall is when the Entertainment Books become available for sale.

2013 Entertainment Books \$30.00

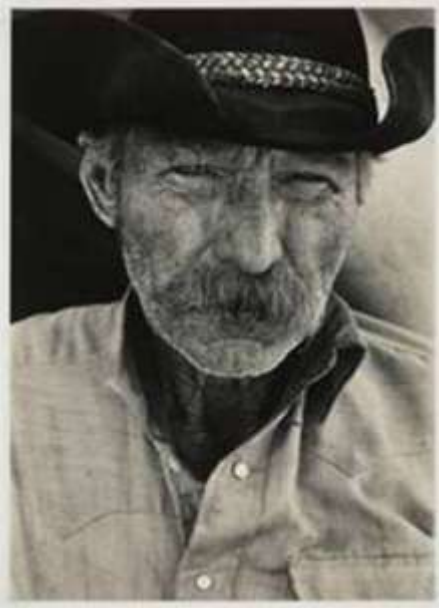
Great way to find new restaurants for dinner socials, travel, entertainment.

Makes great gifts for those that have everything, and much more.

To purchase one or have questions please contact

Charlene and Steve Lee (206)595-7070 or dbleshot2@comcast.net

Benefits Eastside Mothers of Multiples Convention Committee.



A COWBOY TOMBSTONE :

Here are the Five Rules for Men to Follow for a Happy Life that Russell J. Larsen had inscribed on his headstone in Logan, Utah. He died not knowing that he would win the 'Coolest Headstone' contest.

FIVE RULES FOR MEN TO FOLLOW FOR A HAPPY LIFE:

1. It's important to have a woman who helps at home, cooks from time to time, cleans up, and has a job.
2. It's important to have a woman who can make you laugh.
3. It's important to have a woman who you can trust, and doesn't lie to you.
4. It's important to have a woman who is good in bed, and likes to be with you.
5. It's very, very important that these four women do not know each other or you could end up dead like me.



Cookie Lee

Fine Fashion Jewelry

Home & Office Shows * Career Opportunities
Fundraisers

On-Line Shopping at www.cookielee.biz/charlenelee

Charlene Lee

Independent Consultant

206) 595-7070

Charlenelee@cookielee.biz

Shop the Spring 2012 line at

www.cookielee.biz/charlenelee



(425) 347-4545

(800) 735-7031

215 S.W. Everett Mall Way
Everett, WA 98204

HERE'S SOME HELPFUL HOUSEHOLD SMART IDEAS

PLACE A RUBBER BAND AROUND AN OPEN PAINT CAN TO WIPE YOUR BRUSH ON, AND KEEP PAINT OFF THE SIDE OF THE CAN



USE NAIL POLISH TO IDENTIFY DIFFERENT KEYS



USE A HANGING SHOE RACK TO STORE CLEANING SUPPLIES



(AND KEEP THEM AWAY FROM THE KIDS)

USE A (CLEAN) DUSTPAN TO FILL A CONTAINER THAT DOESN'T FIT IN THE SINK



207537-01

The Chapter E 2012 Postal Route

Mileage Contest

Our Mileage contest for 2012 will be a little different this year because let's face it, Chapter E is a little different and we like to do things our way. Rather than collecting safe miles in 2012 we will be collecting safe points. The objective is to visit as many Post Offices in the state of Washington as possible. There are 608 in our great State. You must take a photo of your motorcycle in front of the sign that clearly identifies the Post Office as proof of your visit. The sign and bike must be clearly identifiable in the photo for any points to be collected. If it can't be done safely than no points are awarded. Here are the rules:

- 1) Everyone who enters gets a chance to win BIG CASH AWARDS!!!
Entrants will be put into three groups, each consisting of about one third of all participants.
The top third of point gatherers will be entered in for a drawing of **\$100**
The middle third of point gatherers will be entered in for a drawing of **\$75**
The bottom third of point gatherers will be entered in for a drawing of **\$50**
- 2) Postal Route Mileage Contest is open to Chapter E members only
- 3) Pictures of your motorcycle in front of the Post Office sign must be clearly identifiable
- 4) Each Post Office visit is worth 1 point and each Post Office can count only once for your individual point total.
- 5) 25 Bonus points for the Post Offices visited in the 4-corners of Washington
 - a. Ilwaco Post Office
 - b. Neah Bay Post Office
 - c. Anatone Post Office
 - d. Metaline Post Office
- 6) 15 bonus points for Chapter E overnight ride destinations (may or may not be done on chapter rides)
 - a. Ocean Shores
 - b. Forks
 - c. Grand Coulee
 - d. Grandview
- 7) Chapter is dedicated to the GWRRA motto of, "Friends, for Fun, Safety and Knowledge".
- 8) The contest begins today (2/18/2012). Postal Route Mileage contest pictures must be turned in by the October 20th Chapter Meeting. No emails will be accepted. Pictures must be bundled together with your name, no limit of the number of pictures per page however the bike and Post Office name must be clearly visible in the picture. Judging of the mileage contest submissions will be done by Chapter E directors or designee. All decisions are final.

Winners will be announced at the November Chapter Meeting. If you have any questions about the contest, please email Scott & Karla Edwards, our chapter mileage coordinators at:

novkids@hotmail.com

The Chapter E 2012 Postal Route Mileage Contest

Sample entry sheet:



Karla Edwards
Bow, WA
2/5/2012

Dave's Trikes
Roadsmith kits and Conversions

Sale and Installation

Dave Pomeroy
Pasco, WA

Office 509-547-0725
Cell 509-531-1116
Trikes@dpomeroy.com



Caryl Estes

Call me with your order and I will pay your
shipping and tax
425-531-0866

view my online catalog @
www.WicklessCandleParty.com

BUY · HOST · JOIN



ACN Essential Services

Get exclusive access to outstanding deals on services you already use every day.

ACN Digital Phone Service

- Use your existing phone and Internet to replace your traditional phone service and save on your phone bill with unlimited calling to 70 countries and territories – including Mexico, India and China – and low calling rates to more than 200 other destinations worldwide
- Traditional calling features (call waiting, call forwarding) and premium features (the ability to check voice mail online) are already included

Traditional Landline Phone Service

- Keep the service you love, but get more value
- Flexible calling plans to fit your lifestyle and budget – everything from basic to unlimited calling plans are available!

High Speed Internet

- Enjoy Internet as fast as it gets at home or on-the-go! ACN offers choices from the nation's leading Internet providers featuring the latest state-of-the-art technology and lightning-fast speeds

Wireless

- Choose from the nation's top carriers or enjoy the best of a pre-paid and post-paid plan with Flash Wireless – no credit checks, no contracts and affordable monthly rates!
- Significant savings on the latest devices
- Enjoy low rates on international and long distance calls to more than 200 destinations through ACN's smartphone application, ACN Mobile World

Television

- ACN has something for everyone with options from the nation's top TV providers, whether you're looking for the most in sports, international programming, outstanding picture quality or the most advanced technology

Business Services are also available.

To order services, please visit my online store

<http://peck.acnibo.com>
425-908-7321

Home Security and Automation

- Invest in peace of mind for you and your family with an affordable security package whether you're a homeowner or renter
- Options to manage your energy use, control locks and video surveillance features all from your smartphone

Energy

- Natural gas and electricity services with a variety of plans and pricing options not available through your local utility
- Get the same reliable energy service with no change in the generation, delivery or maintenance of your energy services

ACN Premium Technical Support

- Low-cost computer support delivered securely over the Internet – no need to leave your home or send your computer out for repair
- Support available 24/7 – with anti-virus and backup options available to keep your documents, emails and digital photos safe

ACN Partner Products and Services



©ACN Opportunity, LLC 2012_EssentialServicesFlyer_BP_072712

GWTA Chapter E - Lake Washington Gold Presents...

WING WASHINGTON - 2012

ALL BIKES AND CLUB AFFILIATIONS WELCOME

WING WASHINGTON IS A
PHOTOGRAPHIC TOUR
WITHIN THE STATE, ON
YOUR MOTORCYCLE



A VIEW OF YOUR
MOTORCYCLE AT EACH
CHECKPOINT IS TO BE IN
THE PHOTOS ENTERED

Your \$10.00 *Wing Washington* registration includes:

LIST OF 25 WING WASHINGTON CHECKPOINT SITES

Plus 12 BONUS CHECKPOINTS

The more checkpoints photographed, the more chances to win cash and other prizes - See reverse side for details.

WING WASHINGTON BANQUET - SATURDAY, OCTOBER 13, 2012

- \$25 Buffet Dinner with lots of delicious options
- 4PM at VFW Post 2995, 4330 148th Ave NE, Redmond, WA

\$100 / \$50 / \$25 CASH DRAWING, BASED ON SITES VISITED

CHANCE FOR MANY OTHER GREAT PRIZES

50/50 DRAWING

What It Costs

Ride site list and banquet: \$35.00

Ride site list only (no banquet): \$10.00

Attend Banquet, but only for tickets & drinks: \$10.00 (no dinner)

Banquet only (no ride): \$25.00 if pre-registered by September 29, 2012

Banquet only, not pre-registered by September 29, 2012: \$30.00 (at the door)



Benefits the Eastside Domestic Violence Program

The majority of profits (a minimum of \$500) will be donated to Eastside Domestic Violence Program, the largest provider of services for domestic violence victims in Washington.

See the *Wing Washington* web site at: www.WingWashington.com

WING WASHINGTON - 2012

Wing Washington is a motorcycling event that will take you, your motorcycle, and your camera to many scenic and interesting locations throughout the state of Washington. We have compiled a list of 25 sites. Themes include: *Presidents, Boy's Town Names, Girl's Town Names, Steeple Chase, and \$100 Hamburgers*. For long distance riders that enjoy a challenge, there are 12 bonus sites comprised of *Interesting, Creative Lodging*.

Take a picture of your motorcycle (preferably with you in the picture) at each site you visit. The more sites you photograph the more chances you have to win cash and other prizes at the **Wing Washington** Banquet. Every site is worth one ticket.

Photos must be turned in at the **Wing Washington** Banquet on October 13, 2012. Write the site name and number on back of each site photo, please. Tickets for the cash prize drawings and other prize drawings will be issued to you when your photos are turned in and validated. If you cannot attend the Banquet, have a friend attending the Banquet submit them on your behalf.

The combined entry fee of \$35.00 per person includes the list of 37 **Wing Washington** sites (\$10) and admission to the Banquet (\$25), which is the **Wing Washington** closing event. The Banquet will be held on Saturday, October 13, 2012, 4PM at VFW Post 2995, 4330 148th Ave NE, Redmond, WA, 98052. The site list will be sent to you soon after your registration and entry fees are received, after January 1, 2012. GWTA Chapter E hopes you enjoy participating in **Wing Washington - 2012**. Ride safe and have fun!

Keep up with Site Updates at: www.WingWashington.com

REGISTRATION	↓	FILL OUT - CUT OFF - MAIL IN	↓	REGISTRATION
RIDER 1 _____		_____		_____
RIDER 2 _____		_____		_____
ADDRESS _____				↑ EMAIL ADDRESSES ↑
CITY _____		STATE _____ ZIP _____		
CLUB AFFILIATION, IF ANY _____		CHAPTER _____ TELEPHONE (____) _____		

Payable to: **GWTA-CHAPTER E** | Mail to: **Wing Washington, Jerry Weltner, 7708 147th Ave NE, Redmond, WA 98052**

(v)	(Qty)	(Sub-total)
___ Site list and banquet	___ @ \$35.00 = \$	_____
___ Attend Banquet, drinks & tickets	___ @ \$10.00 = \$	_____ (Does not include dinner)
___ Banquet only (not going to sites)	___ @ \$25.00 = \$	_____ (At-the-door price for Banquet - \$30.00)
___ Site list only (not going to banquet)	___ @ \$10.00 = \$	_____
TOTAL = \$		_____

I/We the undersigned, agree to and will comply with the rules covering this event. I/We further agree to hold harmless the GWTA, its officers and representatives, or persons sponsoring this event for loss or injury to property or myself incurred by reason of participation in this event. I/We have read and understand the above.

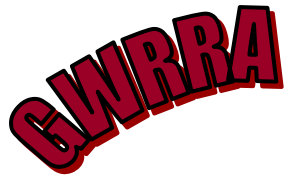
Rider 1 signature

Rider 2 signature

GWRRA WASHINGTON MEETINGS

4th Saturday	8:30AM	A-Seattle	Old Country Buffet, 25630 104th Ave. SE, Kent, WA 98030
1st Sunday	8:30 AM	B-Bremerton	NEW Arena Sports Bar & Grille, 4111 Wheaton Way Bremerton, WA 98310
2nd Saturday	8:00 AM	C-Everett	Denny's, 132 128TH St. SW, Everett, WA 98204
2nd Sunday	8:30 AM	D-Aberdeen	Duffy's Restaurant, 1605 Simpson Ave, Aberdeen, WA 98520
3rd Saturday	08:30AM	E- Bellevue	Crystal Creek Café, 22620 Bothell-Everett Hwy. Bothell, WA. 98021
2nd Tuesday	6:30 PM	H-Lynden	Fairway Restaurant, 1726 Front St, Lynden, WA 98264
3rd Sunday	8:30 AM	I -Olympia	Fatsos Bar and Grill 3205 Martin Way E. , Olympia, WA
2nd Saturday	9:00 AM	L-Kennewick	Sandstone Café 104 W. 1st. Kennewick, WA 99336
1st Saturday	12:00 PM	M-Yakima	Legends Casino 580 Fort Road Toppenish, WA
3rd Sunday	8:30 AM	N-Spokane	Golden Corral Restaurant, 7117 N Division, Spokane, WA 99208
4th Saturday	8:00 AM	O-Port Orchard	Airport Diner, 8803 State Hwy 3 SW, Port Orchard, WA 98367
3rd Saturday	1:00 PM	P-Longview	Sizzler, 936 Ocean Beach Hwy.,Longview, WA. 98632
1st Friday	7:00 PM	Q-Puyallup	Hangar Inn, 16919 A Meridian E, Puyallup, WA 98372
1st Saturday	9:00 AM	R-Walla Walla	Oasis Restaurant. Old Milton-Freewater, OR 97862
1st Thursday	6:00PM	V-Auburn	The Station Bistro, 110 2nd St SW, Auburn, WA
1st Saturday	8:30 AM	X-Vancouver	Hometown Buffet, 7809 B NE, Vancouver, WA 98686
2nd Friday	6:30 PM	Y-Enumclaw	Krain Corner Restaurant, 39929 264th SE, Enumclaw, WA 98022
2nd Saturday	1:00 PM	Z-Centralia	PJ's Pizza, 1232 Alder St. Centralia, WA 98531

GWRRRA DISTRICT & REGION INFO



Gold Wing Road Riders Association—www.gwrra.org Mike Stiger, Director



Washington District Staff

<http://www.gwrra-wa.org/>

WA District Directors Susie & Frank Hutchinson

Asst. District Directors Reggie Baumer and
Chuck Porter

Asst. District Directors Wally & Anna Wallingford

District Treasurer - Susan Remer

Membership Coordinator—Gerry Alexander

District Rider Educator - Bob Minor

District Rider Educator Stores— Tom Denny

District Leadership Trainer - Roy & Pearl McKenzie

Asst. Rider Education—Randy & Debby Reid

District Ambassadors— Jerry & Judy Thompson

District Stores - TBD

District Webmaster - Becky Minor

District Couple of the Year - Mike & Janet Turner

District IOY/COY Coord. - Mike & Janet Turner

District Newsletter Editor - Brad & Dee Kane



Region I Staff

<http://www.bigskyregioni.org/>

Region Directors - Mike and Peggy Hudnell

Assistant Directors - Dale and Shirley Dufner

Assistant Directors - Terry and Cheri Huffman

Assistant Directors— Russ and Laurie Parpart

Instructor Coordinators—Tim and Marie Mitchell

Rider Educators—Bob and Becky Minor

Motorist Awareness - Dave and Sheila Chavez

Treasurer - Erv and Phyllis Granahan

Membership Enhancement Coordinator -

Carmen & Dan Weakland

Leadership Trainers— John and Diane Kester

Region I Ambassadors - Tom and Mozelle Edwards

Region I Ambassadors - Hank and Marilyn Smith

Couple of the Year Coordinators— Dan and Carmen Weakland

Couple of the Year - Larry and Barbara Kuzma

Webmaster - Scott Bowman

Newsletter Editor— Shirley Dufner



Advertise with us

Corporate: \$100.00 per quarter.

Medium (½ pages): \$50 per quarter.

Small (business card): \$25 per quarter

Rates above are per quarter. All interested companies
should inquire with Bob Spencer at: bspswae@frontier.com

Special Reminder: Don't forget to look for your membership number hidden somewhere in our newsletter. If you find your number, this could mean \$ for you if you tell us at the Chapter E meeting of the month of the newsletter. We encourage you to identify yourself at the meeting.



If you have pictures to add to the
Chapter E Website, please email
John Smith, Chapter E Webmaster
at allabout@frontier.com