

# GWRRA Chapter "E" WA

Friends for fun, safety and knowledge



Gold Wing Road Riders Associations:  
Big Sky, Region I & WA District



**OCTOBER, 2007**

## Message from our Chapter Directors:

It has all happened so fast, it's hard to believe sometimes. Sheila and I can vividly remember first joining Chapter E and remarking to ourselves, "this is pretty cool...they're all such nice people!" We were intrigued; 'would it be possible to enjoy our motorcycling and in the process make new friends that like to do some of the same things that we like to do with motorcycles?' You have all helped to provide the answer..."YES."

Actually, it really has been fast. We joined the Chapter E "family" only at the very beginning of last year. We have only just begun to know each and every one of you and now we find ourselves as your new Chapter Directors. We are honored with the trust and responsibility you have placed on us and delighted with the opportunity to work and play with all of you, as well as continue to cultivate new friendships with the members of Chapter E.

What can you expect of us? The answer is an easy response ... "more of the same". Bob and Patty have done a wonderful job in developing and enhancing the Chapter. Sheila and I intend to continue this effort but we also need your help and assistance as you have helped Bob and Patty. This is our Chapter and we can all help to make it even better. I have already called on a number of you to take on new assignments and responsibilities and we are looking forward to working more closely with them. My Vision for the Chapter is pretty straight forward ...continue to enhance our Ride and Safety Program, make Chapter activities even more fun, continue our growth with new members and activities, and make us the best Chapter we can be in the Washington District. You will hear from us on at least a weekly basis as we continue the "What's Happening!" news bulletin and, of course, at our monthly Chapter Meetings. We will try our best to keep you apprised of what is going on around the State, Region and Nationally in the GWRRA. Accordingly, if there is something you would like us to know or pass along to other Chapter members, we encourage you to contact us and welcome your comments. We can do all of these things, but we need your help. Let's do this together.

"Ride Often - Ride Safe",



Dave & Sheila



Our October meeting was:

Saturday, October 20th

**Our next meeting is:**

**Saturday, November 17th**

Denny's

at

Canyon Park

22833 Bothell Everett Highway

Breakfast

Meeting Hours:

Breakfast at 8:00

Meeting at 8:30





# GWRRA NEWS PAGE



## Are you a Member or a Participant?

By Clara & Fred Boldt, MED Membership Enhancement/Public Relations Coordinator

A few days ago, while working on a project the question arose. What is the difference between a Member and a Participant of GWRRA? Seemed to be a logical question and one that I suspect many of you have asked or been asked on occasion.

"Webster's Dictionary" defines Member as: a limb or organ; essential part of anything and Participant as: sharing; one who shares or partakes.

As a Member of GWRRA we pay our membership fees, receive a Wing World Magazine, a gold book, and all the benefits of the membership.

One of the benefits of a membership is the opportunity

to Participate. You read it right, the opportunity to Participate. The choice is ours! We are members of GWRRA, and with this membership we have the privilege of being participants of any chapter, district or region of our choice. As GWRRA members, we may have a "home" chapter. A "home" chapter is one that may be the closest to where we live and participate with on a regular basis.

With that, the answer to the question "Are you a Member or Participant" is you are both Member and Participant! We are a Member of GWRRA and Participant of a chapter/district or region.

## Membership Enhancement Web Site

By Rick Buck, MED Webmaster

If you haven't visited the GWRRA Membership Enhancement web site lately you are missing a lot of good information and a new look. First thing you have missed is that the web address has changed. The new web address is <http://med.gwrro.org/>. For those of you that have links on a Region, District or Chapter web site that points to the GWRRA Membership Enhancement site or any of its contents you will need to update the links with the new address.

Beside the new look, we have tried to format the site to easily find information you might need or just want to review. We have also added a number of new information items. Since GWRRA members like to travel and stop by events we have added an **Events** page. This page is designed for Region and Districts to be able to list the upcoming rallies with links back to the Region or Districts web sites. All a Region or District staff needs to do is

send an email with the information about the rally to the Webmaster.

The second addition is we have made is listing GWRRA recruiting superstars on the **Hall of Fame** and **Hall of Honor** pages. The last addition we made is a **Feedback** form. From the web site you can provide feedback, ask questions or get information directly from the Membership Enhancement Director, June Agee without having to send an email. Our goal is to add new or update current information on the web site at least once a month. The main page of the site will display the date new information was added or changed and where it is located. So you will want to check back on a regular basis so you don't miss anything.

If you any thoughts, ideas or suggestions about the site you can forward them to the Webmaster at [rmbuck@tampabay.rr.com](mailto:rmbuck@tampabay.rr.com).

# Rider Education

## New and High Tech

By Jim & Karen Roberson

We all know by now that the new Gold Wings have an air bag option. We are also pretty sure that even if we had one of them we would not want to be one of the first to find out how well it works. We also are pretty sure we don't want to test out the product I am going to cover in this article, but it does bear some research and from the information provided on the website ([www.impactjackets.com](http://www.impactjackets.com)) it looks like it also could be a real life saver.

I am talking about the Impact Jacket® manufactured by IMPACT JACKETS, LLC, 1450 Mercantile Lane, Ste. 121, Largo, MD 20774. The Impact Jacket® is a personal airbag for the upper body that is contained in a mesh riding jacket. From the pictures and description it looks very similar to products we are all familiar with; a mesh jacket with wind/rain liner, armor in the shoulders, elbows and back but it also has an airbag insert that inflates within .05 seconds when you are ejected from the motorcycle. The assumption is that you have followed all of the instructions for use.

The operation is similar to a dead man switch on small boats and jet skis. A lanyard is attached to the key for the engine and your personal flotation device. If you are thrown out of the boat, the engine stops. In this case the airbag jacket is attached to the motorcycle with a cable that on release inflates the airbag and provides extra protection for you.



We cannot overstate the importance of wearing good protective clothing when riding a motorcycle. This goes for your helmet, jacket, pants, gloves and boots. The more safely you ride the better protected you are. There are no guarantees that no injury will occur. Take the extra few minutes to dress right for the ride. Most of you got the email entitled Think asphalt means a faulty butt? Think he might want to consider a pair of riding pants with armor in them? There is no guarantee that he would not wind up with some injury but it might not be as bad. I would say the riding pants would be a much safer way to go.

The Impact Jacket is not inexpensive (\$395) but it might be worth a look! Ride Safe!!!

## Chapter E Library

Please contact Jim & Karen Roberson if you are interested in borrowing something for your reading or viewing pleasures.

- ◆ Book: Street Strategies by David L. Hough
- ◆ VHS: Co-Rider from GWRRA (2002)
- ◆ VHS: Part 1: Helmet Effectiveness (Hurt Report)
- ◆ VHS: GWRRA & Safeco present Touring & Braking / Trailing (1996)
- ◆ VHS: Basic Maintenance of the 1500 Goldwing with Andy MacDonald
- ◆ VHS: Advanced Maintenance for the 1500 Goldwing with Andrew MacDonald
- ◆ Report: Impaired Motorcycle Riding: What Motorcyclists Think About Alcohol and Motorcycling, February 2001
- ◆ Book: Proficient Motorcycling by David L. Hough
- ◆ VHS: Gary Sanford's Slow Speed Cycling Seminar
- ◆ Part 2: Co-Rider from GWRRA (Pre-2002)
- ◆ VHS: Buying Motorcycle Helmets (Snell Memorial Foundation)
- ◆ Report: Fatal Single Vehicle Motorcycle Crashes, October 2001
- ◆ Report: Drowsy Driving and Automobile Crashes





# What's on the Calendar?



**October 25<sup>th</sup> – Chapter Dinner Social** – We will be meeting at the “**Café Veloce**” in **Totem Lake**. Check out the menu at [www.cafeveloce.com](http://www.cafeveloce.com) . 12514 120<sup>th</sup> Ave. NE, Kirkland, WA. 98034. 425.814.2972 Dinner starts at 6 PM. See you all there!

**October 26<sup>th</sup> – 28<sup>th</sup> – Chapter “F” Mall Show** - Held at the “South Hill Mall” in Puyallup. This is an “all motorcycle” mall show with lots of different bikes to see. Let us know if you’re interested in going and we’ll help put a group together. More information at [www.gwrra-waf.org](http://www.gwrra-waf.org) then click on “2007 Mall Show”. Also, the weather is looking good for Sunday (October 28th) so Bob is planning on putting a ride together that will stop by the Mall Show and either ride some roads on this side of the sound or out to the peninsula . Interested, let us know.

**October 27<sup>th</sup> – Chapter “E” Halloween Party** – **Barb and John** are **hosting this most popular party again this year**. **You don’t want to miss out in the fun!** Sheila and I have our **costumes picked out and are ready!** **Do you?** See **October 23rd “What Happening” e-mail from me for details.**

**November 10<sup>th</sup> – Chapter “E” 2008 Ride and Activity Planning** – Once again Ernie and Sue are hosting our annual “Ride Calendar” meeting. We will begin at the meeting at 10:00 a.m. and when finished we will eat and play games. More information to follow.

**November 15<sup>th</sup> – Chapter Dinner Social** – Place and time to be announced.

**November 17<sup>th</sup> – Chapter “E” Breakfast Meeting** – After meeting activity will be “Movie Day”

**Nov 30<sup>th</sup> – Dec 2<sup>nd</sup> – International Motorcycle Show** – The 27th annual *Cycle World* International Motorcycle Shows presented by Toyota will be held on November 30-Dec 2, 2007 at the Qwest Field Event Center in Seattle. Let us know if you’re interested in attending, and we can get \$2 off discount coupons (good for adult tickets).

**December 2<sup>nd</sup> – Chapter “E” Christmas Party** – Lots of information to follow. Chapter members interested in helping plan the party, please let us know.

**December 8<sup>th</sup> – Chapter “D” Festival of Lights Parade** – There are a lot of you that have not had the chance to share in this festive occasion so we have decided that we will participate as a chapter this year, with our very own entry in the parade. Put the date on the calendar and stay tuned for more information! This is a late Saturday night event, but it’s worth it!



Roll-A-Home camper with king size bed, spare tire, front storage box, rear light bar, etc. Used for only 2 camping seasons. Still in really good condition. \$3,000 Contact: Anna Hersey at (425) 827-8274 or (206) 409-0986 or [adhersey@yahoo.com](mailto:adhersey@yahoo.com).

## “Pakit Rack”

Fit’s 2001 to 2005 GL-1800. Like new. Complete with Bag, cover and mounting hardware. Contact John Smith if interested.



# Factoids

## Or "Things That Might be Fun to Know"

### Ten Obscure Factoids Concerning Albert Einstein

#### 1. He Liked His Feet Naked

"When I was young, I found out that the big toe always ends up making a hole in the sock," he once said. "So I stopped wearing socks." Einstein was also a fanatical slob, refusing to "dress properly" for anyone. Either people knew him or they didn't, he reasoned - so it didn't matter either way.

#### 2. He Hated Scrabble

Aside from his favorite past-time sailing ("the sport which demands the least energy"), Einstein shunned any recreational activity that required mental agility. As he told the New York Times, "When I get through with work I don't want anything that requires the working of the mind."

#### 3. He Was A Rotten Speller

Although he lived for many years in the United States and was fully bilingual, Einstein claimed never to be able to write in English because of "the treacherous spelling". He never lost his distinctive German accent either, summed up by his catch-phrase "I vill a little t'ink".

#### 4. He Loathed Science Fiction

Lest it distort pure science and give people the false illusion of scientific understanding, he recommended complete abstinence from any type of science fiction. "I never think of the future. It comes soon enough." He also thought people who claimed to have seen flying saucers should keep it to themselves.

#### 5. He Smoked Like A Chimney

A life member of the Montreal Pipe Smokers Club, Einstein was quoted as saying: "Pipe smoking contributes to a somewhat calm and objective judgment of human affairs." He once fell into the water during a boating expedition but managed heroically to hold on to his pipe.

#### 6. He Wasn't Much Of A Musician

Einstein would relax in his kitchen with his trusty violin, stubbornly trying to improvise something of a tune. When that didn't work, he'd have a crack at Mozart.

#### 7. Alcohol Was Not His Preferred Drug

At a press conference upon his arrival to New York in 1930, he said jokingly of Prohibition: "I don't drink, so it's all the same to me." In fact, Einstein had been an outspoken critic of "passing laws which cannot be enforced".

#### 8. He Equated Monogamy With Monotony

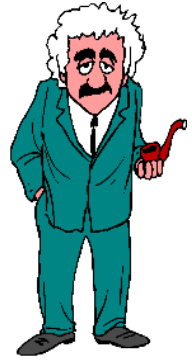
"All marriages are dangerous," he once told an interviewer. "Marriage is the unsuccessful attempt to make something lasting out of an incident." He was notoriously unfaithful as a husband, prone to falling in love with somebody else directly after the exchanging of vows.

#### 9. His Memory Was Shot

Believing that birthdays were for children, his attitude is summed up in a letter he wrote to his girlfriend Mileva Maric: "My dear little sweetheart ... first, my belated cordial congratulations on your birthday yesterday, which I forgot once again."

#### 10. His Cat Suffered Depression

Fond of animals, Einstein kept a housecat which tended to get depressed whenever it rained. Ernst Straus recalls him saying to the melancholy cat: "I know what's wrong, dear fellow, but I don't know how to turn it off."



### The Definition of a Farkle (contributed by Karla Edwards)

- Farkle...noun:** a shiny accoutrement specific to motorcycles
- farkleage...pl noun:** an assortment of farkles attached to a motorcycle
- farklicious...vb:** a particularly attractive farkle
- farklasm...noun:** the exceptionally brief but intense joy experienced between the acquisition of a farkle and the arrival of the credit card bill for same
- farkleholiC...noun:** a motorcyclist with too much money and an addiction to mounting devices...or a Harley rider
- farkle fickle...adj:** describes a motorcyclist who too frequently upgrades farkles
- sparkle farkle...noun:** a chromed farkle of purely cosmetic value. (See farkleholiC above)
- forkal farkle...noun:** fork attached farkles, like Moto-Lights
- parkle farkle...noun:** custom made plastic plate with manufacturers emblem used instead of a cheap wooden block to place beneath kickstand when parking on hot asphalt

# Chapter E Ride/Activities Calendar

## October

- 6 WA Dist. Leadership Workshop - Moses Lake
- 20 WA-E Chapter Meeting (Fall Colors Ride)
- 25 Dinner Social - Café Veloce Totem Lake - 6 PM
- 27 South Hill Mall Show
- 27 Smith's Halloween Party

## November

- 10 Ride Planning/Activity Meeting
- 15 Dinner Social - TBA - 6 PM
- 17 WA-E Chapter Meeting (Movie Day)

## December

- 2 WA-E Christmas Party
- 8 WA-D Festival of Lights - Montesano
- 9 Jingle Bell Run
- 15 WA-E Chapter Meeting

## IMPROMPTU RIDE IDEAS

- \* Light House Tour
- \* Boulder Caves - East Side Mt Rainier
- \* Mt. St Helen's Ride
- \* Wacky Tour
- \* Three Pass Loop
- \* "Apple" Tour by WA-V
- \* Hood Canal Loop
- \* Mount Baker
- \* Lake Chelan Loop



## GWRRA Washington District Gathering Sites

Day	Time	Chapter	Location	Day	Time	Chapter	Location
1st	Thu 6:00 PM	"V" Auburn	Eagles of Auburn, 702 M St. S.E., Auburn	2nd	Sat 8:00 AM	"C" Everett	Petosa's Restaurant, 3121 Broadway, Everett
1st	Fri 7:00 PM	"Q" Puyallup	O'Farrells' Family Restaurant, 1100 Meridian, Puyallup	2nd	Sat 8:00 AM	"L" Kennewick	Country Gentleman Restaurant, 300 N. Ely St., Kennewick
1st	Sat 8:00 AM	"M" Yakima	Branding Iron Restaurant, 61311 Hiway 97, Toppenish	2nd	Sun 8:30 AM	"D" Aberdeen	Duffy's Restaurant, 1605 Simpson Ave., Aberdeen
1st	Sat 8:00 AM	"R" Walla Walla	Fountain Café, 190 S. Main, Milton Freewater, OR	3rd	Thu 6:30 PM	"S" Ephrata	Golden Corral, 930 N. Stratford Rd., Moses Lake
1st	Sun 9:00 AM	"B" Bremerton	Bremerton Eagles, 205 6th, Bremerton	3rd	Sat 8:00 AM	"E" Bellevue	Denny's, Canyon Park, 22833 Bothel Everett Hwy., Bothell
2nd	Tue 6:30 PM	"H" Lynden	Fairway Family Restaurant, 1726 Front St., Lynden	3rd	Sat 8:30 AM	"G" Gig Harbor	Cottesmore Life Center, 2902 14th Ave. N.W., Gig Harbor
4th	Sun 8:30 AM	"F" Tacoma	IHOP, 7445 S. Hosmer, Tacoma	3rd	Sat 8:30 AM	"K" White Salmon	Charburger Country, 4100 W. Cliff Dr., Hood River, OR
2nd	Fri 6:30 PM	"Y" Enumclaw	Krain Corner Restaurant, 39929 264th S.E., Enumclaw	3rd	Sat 8:00 AM	"P" Longview	Monticello Hotel, 1405 17th Ave., Longview
2nd	Sat 5:30 PM	"Z" Centralia	Denny's, Exit 82, Harrison Ave., Centralia	3rd	Sun 8:30 AM	"I" Olympia	North's Grand Buffet, 2915 Harrison Ave. N.W., Suite #255, Olympia
4th	Sat 9:00 AM	"A" Seattle	RMC's Full Throttle Café, 3701 E. Valley Highway, Renton	3rd	Sun 8:30 AM	"N" Spokane	Golden Corral Buffet & Grill, 7717 N. Division, Spokane

# Chapter Staff

## Chapter Director

Dave & Sheila Chavez

## Store Managers

Rick & Dori Meyers

## Treasurer

Jim & Karen Roberson

## COY

OPEN



## Ride Director

Bob Spencer

## Mileage Coordinator

Karla & Scott Edwards

## Asst. Chapter Director

John & Barb Smith

## Chapter Educator

Jim & Karen Roberson

## Historians/Photographer

Ron & Lana Jo Peck

## Designer

Penny Rosenow

## Ride Coordinators

Jimm Burke

Jim Pelican

## Lighthouse Photo Tours

Bob & Thess Thurgood

## Newsletter Editor

Sheila Chavez

## Membership Coordinator

Sheila Chavez

## Web Page

John Smith

## Cares & Concerns

TBD

## Dinner Socials

Leah Gray

Karla Edwards

## PLP Coordinator

Ron Peck



Together, we  
can make  
a difference!



## National, Region I & District Staff



### National

#### Executive Director

Melissa Nordeoff

[mnordeoff@gwrra.org](mailto:mnordeoff@gwrra.org)

### GWRRA International

#### Operations Director

Jim & Margie Hodge

(228) 875-1764

[rallybum@cablone.net](mailto:rallybum@cablone.net)

### GWRRA International

#### Headquarters

21423 N 11th Ave,

Phoenix, AZ 85027

Phone (800) 843-9460

### Region I Director

Roy & Pearl Mckenzie

253 862 0220

[rpwnqdom@tx3.net](mailto:rpwnqdom@tx3.net)

### Asst Region I Director

Steve & Sandra Henicksman

208 523 9813

[ssheni@cablone.net](mailto:ssheni@cablone.net)

### Region I Educator

Steve & Lori Fretts

360 533 0626

[sfretts@earthlink.net](mailto:sfretts@earthlink.net)

### Region I Leadership Trainers

Mike & Lynn Briggs

360 459 1530

[mbriggs60@msn.com](mailto:mbriggs60@msn.com)

### WA District Directors

Mike & Peggy Hudnell

[DD@gwrra-wa.org](mailto:DD@gwrra-wa.org)

### WA Asst Dist. Directors

Bob & Patty Spencer

[add@gwrra-wa.org](mailto:add@gwrra-wa.org)

### WA Asst Dist. Directors

Hank & Marilyn Smith

[add@gwrra-wa.org](mailto:add@gwrra-wa.org)

### District Educators

Jim & Pam Swart

[educator@gwrra-wa.org](mailto:educator@gwrra-wa.org)

### Web Sites:

#### WA-District:

<http://www.gwrra-wa.org>

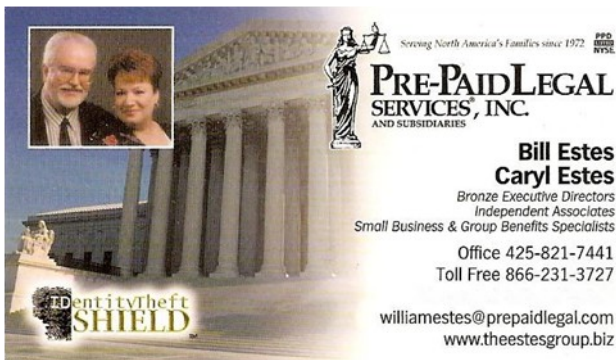
#### Region I:

<http://www.BigSkyRegionI.org>

#### National:

<http://www.gwrra.org/>





**PRE-PAID LEGAL SERVICES, INC.**  
AND SUBSIDIARIES

**Bill Estes  
Caryl Estes**  
Bronze Executive Directors  
Independent Associates  
Small Business & Group Benefits Specialists

Office 425-821-7441  
Toll Free 866-231-3727

williamestes@prepaidlegal.com  
www.theestesgroup.biz

**Identity Theft SHIELD**

## For More Information

Please Call or Visit Our Website

# Cookie Lee®

## Fine Fashion Jewelry

Home & Office Shows \* Career Opportunities  
Fundraisers

**Charlene Lee (206) 595-7070**

Independent Jewelry Consultant **CookieCharlene@comcast.net**  
**www.cookielee.biz/CharleneLee**



**Do you need patches sewn on your vest, shirt or jacket?**

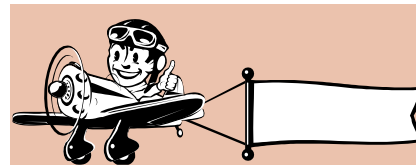
**Carey Chavez** (Dave & Sheila Chavez's daughter) can do it! She will sew on both denim and leather at very reasonable prices.

**\$3.00 for small patches**

**\$5.00 for large patches.**

**Call Carey @ (425) 227-0775**

**Call Carey @ (425) 227-0775**



**Advertise with us!!**

Corporate: \$100.00 per quarter.

Medium (½ pages): \$50 per quarter.

Small (business card): \$25 per quarter

Rates above are per quarter. All interested companies should inquire with Dave Chavez or John Smith.

## Hair Beyond Belief

### Hair Care Products for every hair type

Do you have dry overworked hair? Is it oily? Or is it getting a little thin on top? Well here at Hair Beyond Belief we carry professional hair care products to fit every hair type. Imagine having the shiniest, healthiest hair you could possibly have.

Our professional hair care product lines will help improve your hair and keep it in the best possible condition. When you are in need of a product to help you keep the new style you just received, you can find it here.

[www.hairbeyondbelief.com](http://www.hairbeyondbelief.com)

**Free** shipping on orders totaling over \$60.00

Questions, Please call @ 425-772-6064 between 9 AM and 9 PM PST



## Sit & Stitch Quilting

**Penny Rosenow**

**362545 SE 47th CT.**

**(425) 222-5910**

**Fall City, WA 98024**

[www.wfpgr@comcast.net](http://www.wfpgr@comcast.net)

### Embroidery & Classes

**Penny can do T-Shirts, Jackets & Windshield covers. Just send email or call to place order.**

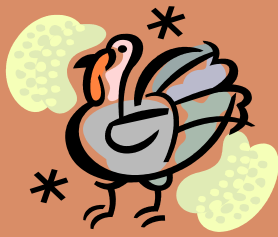




# October 2007



SUN	MON	TUE	WED	THU	FRI	SAT
	1	2	3	4 "Bob & Patty Spencer" Anniversary 	5 Happy Birthday "Dick Stryker" 	6 
7	8	9	10 Happy Birthday "Karen Roberson" 	11	12	13 Happy Birthday "Don Hopkins" "3 Mtn. Pass Loop Ride"
14	15 Happy Birthday "Jimm Burke" 	16	17	18	19	20 Chapter "E" Breakfast Meeting "Fall Colors Ride"
21	22 "John & Barb Smith" Anniversary 	23	24	25 Chapter "E" Dinner Social "Café Veloce" Totem Lake	26 Chapter "F" Mall Show 26 <sup>th</sup> —27 <sup>th</sup>	27 Chapter "E" Halloween Party @ John & Barb's 
28	29	30	31 "Russell & Lee Ann Greaby" Anniversary 			



# November 2007



SUN	MON	TUE	WED	THU	FRI	SAT
				1	2 Happy Birthday "Phyllis Hopkins" 	3
4	5	6	7	8	9	10 Chapter "E" 2008 Ride/ Activity Planning Mtg.
11	12	13 Happy Birthday "Sue Howe" 	14	15 Happy Birthday "Rae Ann Hall" Chapter Dinner Social 	16 Happy Birthday "Karla Edwards" 	17 Chapter "E" Breakfast Mtg. "After meeting "Movie Day"
18	19	20	21	22 Happy Birthday "Scott Edwards" 	23	24 Happy Birthday "Garney Arcand" 
25	26	27	28	29	30 November 30 <sup>th</sup> - Dec 2 <sup>nd</sup> "International Motorcycle Show"	